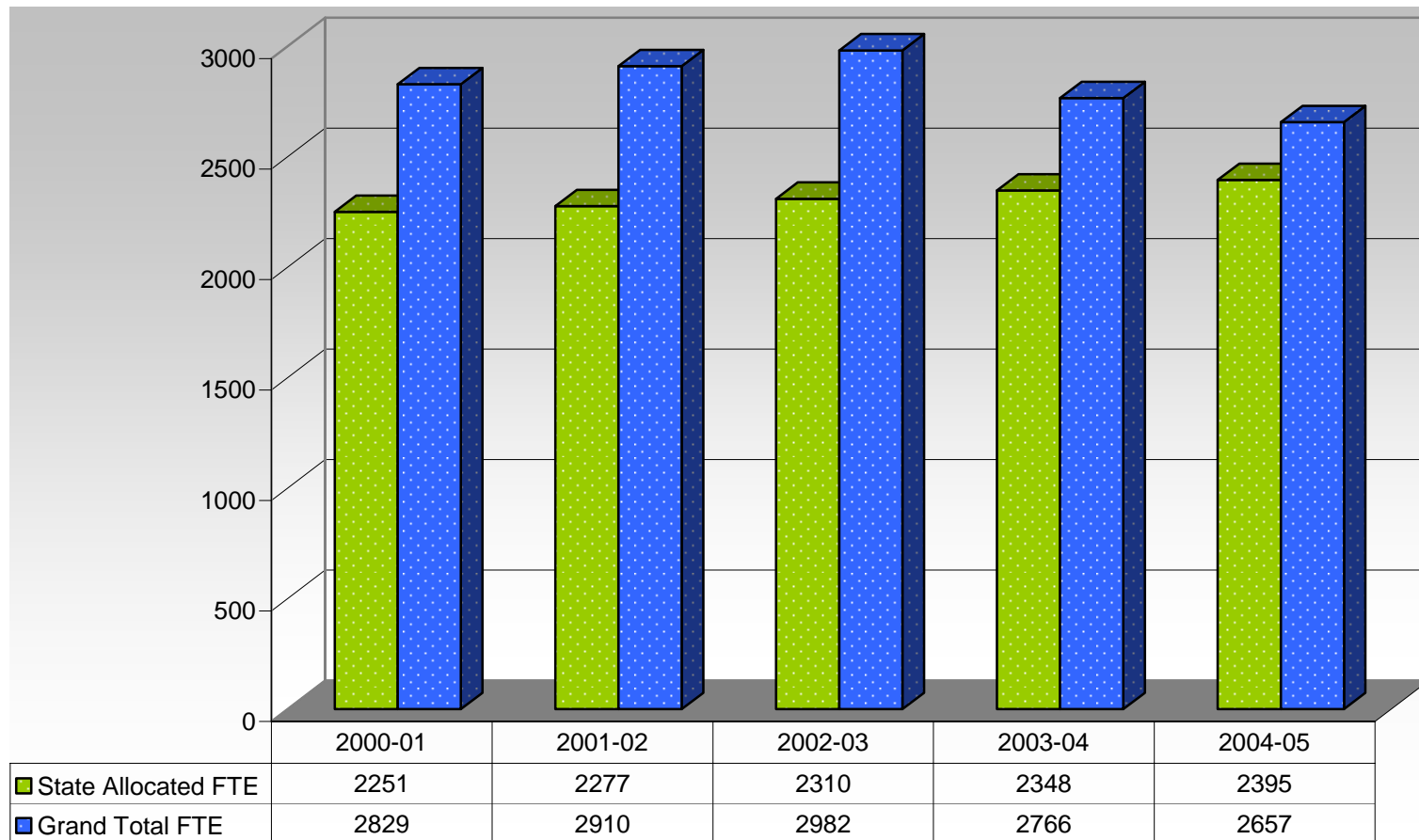


LCC INSTITUTIONAL PORTFOLIO 2004-05

(Formerly Facts & Figures) 8th Edition



COMMUNITY COLLEGE DISTRICT 13

LCC Board of Trustees

Mike Heuer, Chair
Lyle Lovingfoss, Vice-Chair
Kay Cochran
Ann C. Mottet
Thuy Vo

President

Dr. James L. McLaughlin

Vice Presidents

Dr. Laurel Williamson, Instruction
Mary Harding, Student Success
Ellen Peres, Administrative Services

Lower Columbia College

1600 Maple Street
Longview, WA 98632
(360) 442-2000
(360) 442-2379 Fax
(360) 442-2344 TDD
www.lcc.ctc.edu

The chart on the cover depicts the gap between the level of enrollment allocated by the State of Washington and actual attendance, as measured by FTE (Full Time Equivalent). One Annual FTE is equal to 45 enrolled college credits. Data source: SBCTC Academic Year Report.

Data for the 8th Edition of Facts & Figures provided by the Office of Institutional Research, Planning and Assessment. The intent of this report is to provide the campus community and general public with valuable information that is useful and timely. Every attempt has been made to present the data as accurately as possible; however, due to the complexities involved in compiling data from multiple sources, some imperfections may appear. Please contact Wendy Hall, Director of Institutional Research, at (360) 442-2491 for questions or comments.

Printed: October 2005

Table of Contents

Mission & Philosophy	1	Percent of Faculty FTE that is Full-Time.....	26
Brief History of LCC	2	Characteristics of Faculty.....	26
LCC Quick Facts	3	Gender and Ethnicity.....	27
Student Enrollment & Demographics		Financial Data	
2004-05 Student Demographics.....	4	Operating Revenues and Expenditures.....	28
Fall End of Quarter Enrollment Trends.....	5	Government and Private Program Grants.....	29
Annual Enrollment Trends.....	6	Cost per FTE (Full Time Equivalent) Student.....	30
Non-Credit Enrollment.....	7	State Reimbursement per FTE.....	30
Student Home Zip Codes.....	8	Facilities	
Enrollment of High School Graduates.....	9	Acres.....	31
Preparation of Incoming Students.....	10	Buildings.....	31
Most Popular Major Areas of Study.....	11	Gross Square Footage.....	31
Top 10 FTE Generating Departments.....	12	Library Resources.....	31
Distance Education.....	13	Investment Value for Facility Construction.....	31
Financial Aid.....	14	Square Footage by Construction Project.....	32
Student Progress & Success		Foundation	
Degrees & Certificates Awarded.....	15	Net Assets.....	33
Transfer Information.....	16	Program Support to LCC.....	34
Estimated Employment Rates.....	17	Scholarships, Library and Grants.....	34
Wage Data by Program.....	18	Local and Population Data	
Top Major Areas of Study for Graduates.....	19	Labor and Income Data.....	35
Licensure Information.....	19	Service District Participation Rates.....	36
Basic Skills.....	20	Participation Rate of Students of Color.....	36
Pre-College.....	21	Educational Attainment, Earnings & Unemployment.....	37
Running Start.....	22	Crime Statistics	
Athletics.....	23	LCC Crime Statistics.....	39
Student Support Services.....	24	Index	
Tech Prep.....	25	40	
Personnel			
Summary.....	26		

MISSION & PHILOSOPHY

OUR MISSION: The mission of Lower Columbia College is to ensure each learner's success. Influencing lives in ways that are individual and collective, local and global, transfer and preparatory, traditional and innovative, and personal and professional, the College is a powerful force for quality of life in our community.

OUR VALUE SYSTEM: Our campus community expects an environment of integrity, respect, collaboration, cooperation, diversity, and innovation that fosters personal growth, academic excellence, and accountability.

OUR EXPECTED COLLEGE OUTCOMES:

ACCESS: We invite the community to participate in the full array of programs, services, and activities at Lower Columbia College.

TRANSFER: We offer courses and support for students to meet the requirements for transfer from Lower Columbia College and to pursue successfully upper division college and university programs.

PROFESSIONAL/TECHNICAL: We provide opportunities for students to receive quality professional/technical training for employment, skills enhancement, and career development.

BASIC SKILLS: We ensure that all learners who are under prepared for college level studies have the opportunity to receive basic skills instruction for literacy development, diploma completion, English as a second language, citizenship, and preparation for higher education.

CUSTOMIZED EDUCATION: We are an enthusiastic partner with business and community groups to create customized programs and services.

COMMUNITY ENRICHMENT: We enrich the community through diverse cultural, artistic, athletic, social activities and programs for personal enrichment.

INSTITUTIONAL EXCELLENCE: We are committed to institutional integrity, responsible stewardship, and excellence in meeting the educational, cultural, and service needs of the community.

Lower Columbia College is a comprehensive community college and a member of the Washington Community and Technical College system as created by the Community College Act of 1967, serving people of the Lower Columbia region. We are an AA/EEO employer.

Adopted by the Board of Trustees: September 1, 1999

BRIEF HISTORY OF LCC

LCC was established in 1934 as Lower Columbia Junior College. First time students registered for classes at Korten's Music Store in Longview, Dahlman Hardware in Castle Rock, and the Orr Furniture Store in Kelso. Accounts of the number of students who enrolled that first year vary from 42 to 55. Students managing the College's first student newspaper, *The Lower Columbian*, put out ten issues that year. The founding faculty held classes at R.A. Long High School. The first graduating class, including seven students, received their associate degrees in 1936.

The number of enrolled students doubled in the College's second year, climbing to 96. As the number of students increased, instruction expanded into the Myklebust building in downtown Longview, and the Moose Hall. The Moose Hall continued to house classes until 1949, when damage from an earthquake caused the building to be condemned. Classes were also held on the first floor of the Longview Public Library. Enrollment continued to increase, with 149 students in 1939, up to 200 in the early 1950s, and finally reached 300 students in 1954. The proportion of female students also increased during that time. In 1948, the College received its first accreditation from the Northwest Commission on Colleges and Universities.

During the 1930s and 1940s, the College struggled with financial problems, and began to look for its own campus. Twenty-six acres were purchased from the Longview Company in 1942, at a reported bargain price. In 1950, construction began on "Old Main," LCC's first permanent building. The original building was slated to have thirteen classrooms, and came with a price tag of a quarter of a million dollars. The Lower Columbia College League, an association of friends of the College, assisted with fundraising efforts to pay for the construction.

After the College had achieved financial stability, it became a part of the Longview School District. In 1961, the College was elevated from a "junior college" to a "community college." In 1967, LCC joined the state-supported community college system. Today, the College includes 27 buildings on 35 acres, and enrolls approximately 4,000 students each quarter.

Source: Cowlitz Historical Quarterly, Volume XXVI, No. 2, 1984; College records

LCC QUICK FACTS

Students (2004-05)

Total Student Headcount—State (5,556); All (6,802)
 FTE (Full Time Equivalent)—State (2,289); All (2,657)

Students Taking Classes (2004-05)

English as a Second Language	288
Distance Education	1490
Senior Studies (duplicated)	1064
Community Educ. (duplicated)	474

Enrollment by Intent (2004-05)

25%	Transfer
44%	Workforce
11%	Basic Skills
20%	Other

Students in Programs (2004-05)

246	Running Start
181	CEO
151	Worker Retraining

Demographics (2004-05)

62%	Female
13%	Of Color
32	Average Age
44%	Full-Time (10+ cr)

Degrees & Awards (2004-05)

224	AA/AS
191	AAS
479	Certificates & Completions
164	High School Completions & GED

- Transfers: 141 students transferred to public Washington four-year institutions in Fall 2004
- Employment: (2002-03) 85% of Professional/Technical graduates employed within 9 months

- Founded in 1934 and is now one of 35 Washington community and technical colleges
- 35 acre site houses 27 college buildings
- Service Area: District 13 serves Cowlitz & Wahkiakum Counties; additionally 250 students from Columbia County, Oregon served
- Operating budget (2004-05) of \$15.8 million
- Financial Aid: (2004-05) \$7.5 million for 4,336 awards (duplicated count)
- Accredited by the Northwest Commission on Colleges and Universities since 1948
- Foundation Net Assets (2004-05) \$6.5 million
- NWAACC Varsity Sports: Men & Women's Basketball, Men's Baseball, and Women's Softball, Soccer and Volleyball
- Annual tuition (2004-05): \$2,445 (Full-Time, 45 cr)
- 362 Employees (Fall 04): 81 Full-Time, 89 Part-Time Faculty, 14 Administrators, 42 Exempt, 145 Classified Staff

Courses and programs available in 54 disciplines: Accounting, Administration of Justice, Automotive/Diesel Technology, Allied Health, Anthropology, Art, Astronomy, Biology, Blueprint Reading, Business Administration, Business Technology, Chemical Dependency Studies, Chemistry, Computer Info. Systems, College Success, Drama, Early Childhood Education, Economics, Electronics Technology, English, Engineering, Environmental Studies, Earth Science, Fire Science Technology, French, Geography, Geology, Human Development, History, Health, Home & Family Life, Humanities, Industrial Maintenance, Individual Development, Journalism, Library, Machine Trades, Mathematics, Mechanical Engineering Technology, Medical Assisting, Music, Nursing, Oceanography, Paraeducator, Physical Education, Philosophy, Physics, Political Science, Psychology, Pulp & Paper Technology, Sociology, Spanish, Speech and Welding.

2004-05 STUDENT DEMOGRAPHICS

The following characteristics describe students enrolled at LCC during the 2004-05 academic year.

2004-2005	All	State Funded
Unduplicated student headcount	6802 (100%)	5556 (82%)
Female students	3999 (62%)	3317 (61%)
Male students	2465 (38%)	2096 (39%)
African American students	60 (1%)	57 (1%)
Native American students	119 (2%)	110 (2%)
Asian/PI students	131 (2%)	111 (2%)
Hispanic students	378 (6%)	365 (7%)
Multi-racial	55 (1%)	44 (1%)
Students of color (Subtotal)	743 (13%)	687 (14%)
Caucasian students	5155 (87%)	4341 (86%)
Age: 0-18 years old	1038 (15%)	705 (12%)
Age: 19-24 years old	2015 (29%)	1894 (33%)
Age: 25-34 years old	1511 (22%)	1413 (25%)
Age: 35-49 years old	1266 (18%)	1021 (18%)
Age: 50+ years old	1121 (16%)	696 (12%)
Average age, all students	32.4	31.6
Average age, credit students	30.8	30.5
International Students	3 (<1%)	2 (<1%)
Worker Retraining students	151 (2%)	151 (2%)
Running Start students	246 (4%)	23 (<1%)
Credit Students (>1 credit)	5902 (87%)	5185 (93%)
Non-credits students	900 (13%)	371 (7%)

2004-2005	All	State Funded
Transfer students	1911 (25%)	1639 (25%)
Workforce students	3426 (44%)	2992 (46%)
Basic Skills students	859 (11%)	852 (13%)
Personal Interest students	1587 (20%)	971 (15%)
Part-time (< 10 credits) status	4313 (56%)	3318 (52%)
Full-time (10+ credits) status	3441 (44%)	3086 (48%)
Resident students	5451 (91%)	4332 (89%)
Non-resident students	570 (9%)	513 (11%)
Disabled students	196 (3%)	173 (3%)
Day students	6010 (85%)	5030 (87%)
Evening students	1080 (15%)	774 (13%)
Students with no children	2129 (49%)	1940 (48%)
Couples with children	1236 (28%)	1120 (28%)
Single students with children	992 (23%)	942 (24%)
Low-income students	1467 (22%)	1446 (26%)
Unemployed Students	1233 (18%)	1131 (20%)
Prior education: less than high school graduation	1403 (28%)	1236 (28%)
High school or equivalent	3018 (61%)	2832 (63%)
Certificate (< 2 years)	198 (4%)	186 (4%)
Associate degree	137 (3%)	113 (3%)
Bachelor's degree or higher	183 (4%)	126 (3%)

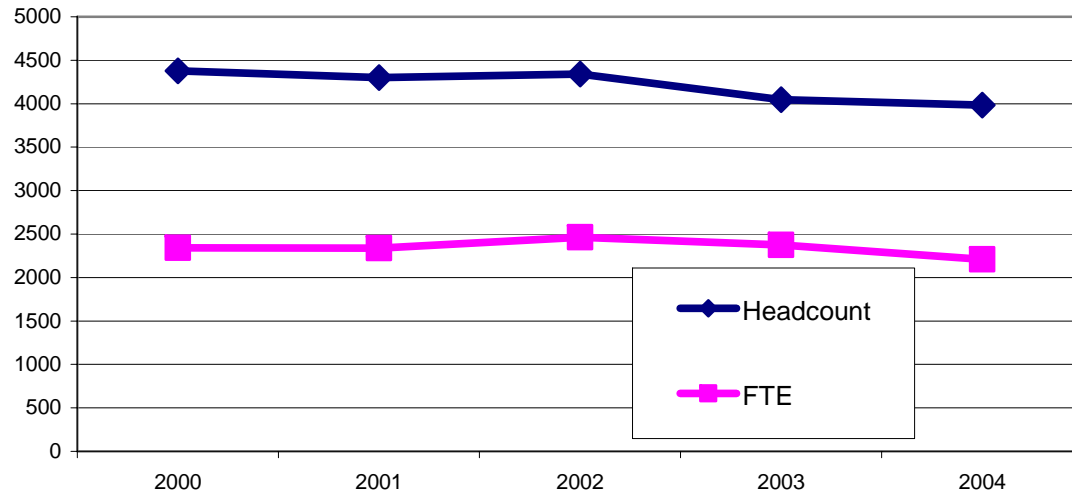
Source: SBCTC Data Warehouse, Student Table. Note: percentages may equal greater than 100% due to rounding. Headcount in some categories may be duplicated if students fell into different categories during different quarters within the 2004-05 academic year (e.g., part-time/full-time status). Note: percentages calculated include only those students who disclosed specific pieces of demographic information. WH_STWKFTTE (Data Express) for Worker Retraining.

FALL END OF QUARTER ENROLLMENT TRENDS

Fall to Fall

Note: One Quarterly FTE (Full Time Equivalent) is equal to 15 enrolled college credits

FALL	Students Enrollment (All)	FTE (State-Supported)
2000	4376	2341
2001	4302	2338
2002	4342	2465
2003	4045	2376
2004	3984	2208



Source: SBCTC Data Warehouse, CLASS Table (FTE_STATE) and Student Table (Headcount).

FALL FTEs by Institutional Intent	Academic	Workforce	Basic Skills	Developmental Studies	Total FTEs
Fall 2000	905 (39%)	768 (33%)	479 (20%)	189 (8%)	2,341
Fall 2001	974 (42%)	836 (36%)	350 (15%)	179 (8%)	2,338
Fall 2002	1,035 (42%)	800 (32%)	412 (17%)	219 (9%)	2,465
Fall 2003	1,022 (43%)	728 (31%)	417 (18%)	209 (9%)	2,376
Fall 2004	1,001 (45%)	667 (30%)	325 (15%)	214 (10%)	2,208

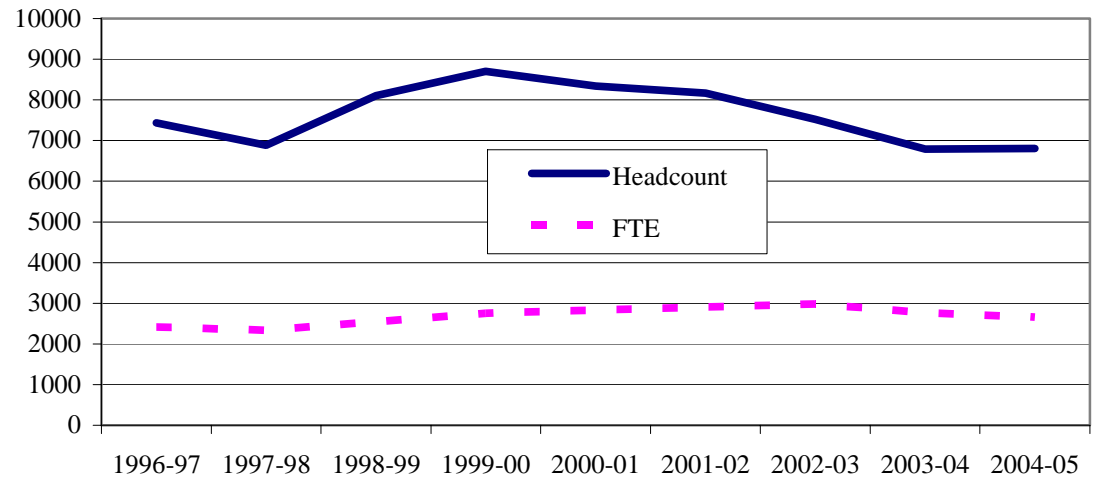
Source: SBCTC Fall Enrollment & Staffing Report, Data Warehouse by Institutional Intent Recat, State Supported

ANNUAL ENROLLMENT TRENDS

Year to Year (All Students, All Funding Sources)

Note: One Annual FTE (Full Time Equivalent) is equal to 45 enrolled college credits

YEAR	Headcount	FTE
1996-97	7439	2418
1997-98	6887	2335
1998-99	8105	2547
1999-00	8700	2754
2000-01	8339	2829
2001-02	8165	2910
2002-03	7522	2982
2003-04	6789	2766
2004-05	6802	2657



YEAR	State Funded FTE	Contract Funded FTE	Student Funded FTE	Total FTE
1996-97	2,239 (93%)	148 (6%)	31 (1%)	2,418 (100%)
1997-98	2,111 (90%)	169 (7%)	55 (2%)	2,335 (100%)
1998-99	2,293 (90%)	204 (8%)	50 (2%)	2,547 (100%)
1999-00	2,438 (89%)	260 (9%)	55 (2%)	2,753 (100%)
2000-01	2,493 (88%)	281 (10%)	55 (2%)	2,829 (100%)
2001-02	2,519 (87%)	334 (11%)	57 (2%)	2,910 (100%)
2002-03	2,604 (87%)	339 (11%)	38 (1%)	2,982 (100%)
2003-04	2,418 (87%)	312 (11%)	20 (1%)	2,766 (100%)
2004-05	2,289 (86%)	342 (13%)	27 (1%)	2,657 (100%)

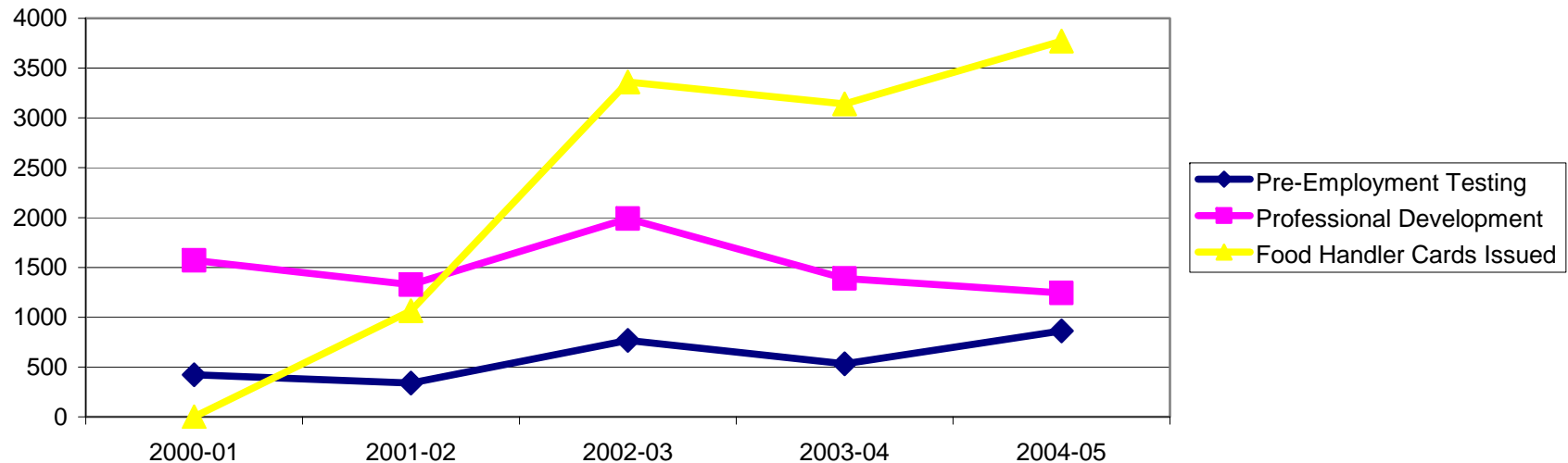
Source: SBCTC Data Warehouse, Student Table (Unduplicated Headcount), Class Table (FTE—FTES_Total/3 – FTES_Waiver/3)

NON-CREDIT ENROLLMENT

LCC offers a variety of non-credit classes and training for employers, workers, job seekers, seniors and personal enrichment.

Community and Customized Education and Training at LCC (headcount)

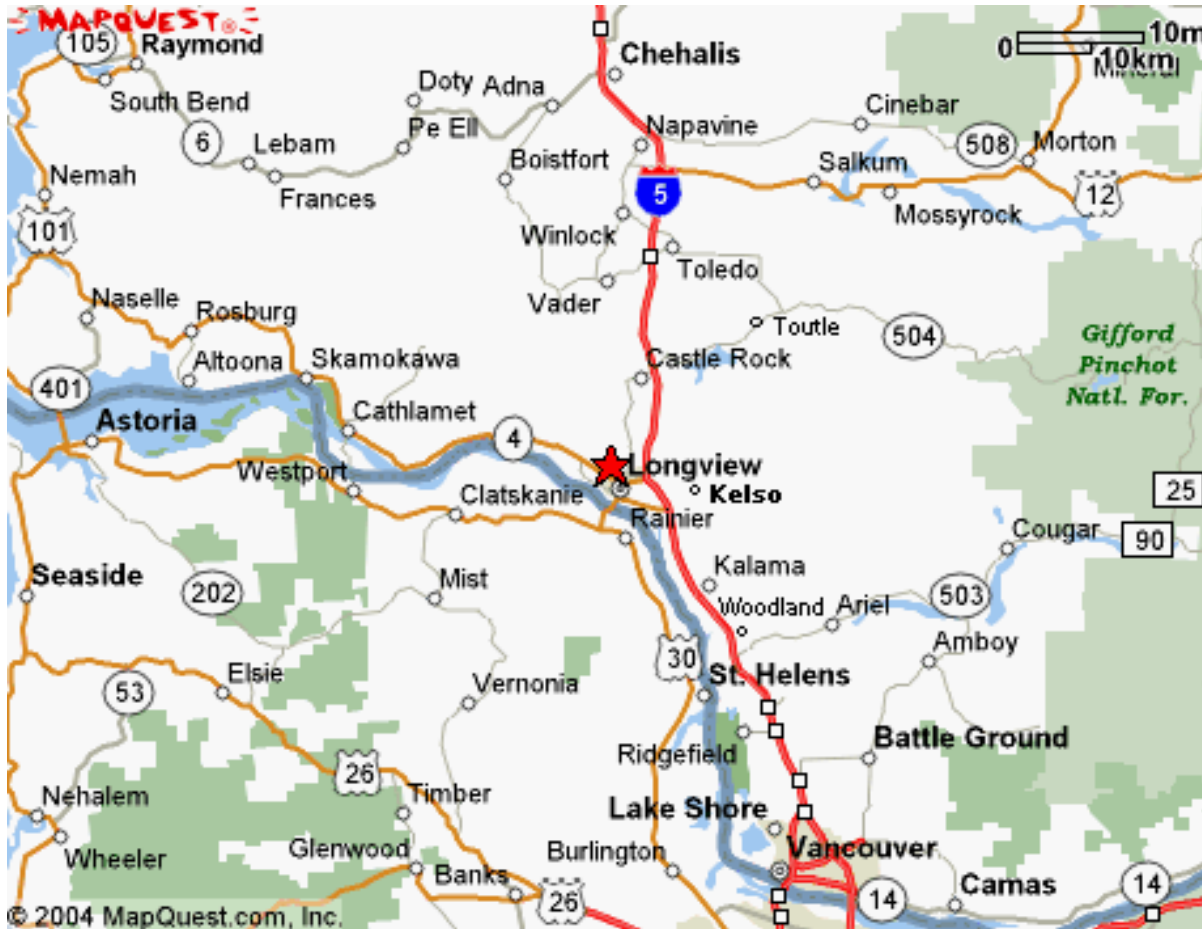
	2000-01	2001-02	2002-03	2003-04	2004-05
Senior Studies	1,247	1,327	825	802	1064
Community Education	841	1,177	668	523	474
Online Classes	253	140	293	146	131
Special Training and Professional Development, including Spanish in the Workplace, Certificate Training, Real Estate Training, Wildland Fire Certification, etc.	1,571	1,327	1,991	1,389	1,244
Food Handler Cards Issued	--	1,066	3,362	3,140	3,770
Clients Served in Pre-Employment Testing	422	339	767	532	861
Contract Training – Client Contracts	54	45	29	17	14



Source: Community Enrichment and Customized Education Monitoring Reports.

STUDENT HOME ZIP CODES

Approximately 92% of LCC students are from the college's official service district, including Cowlitz and Wahkiakum Counties, and Columbia County, Oregon (although LCC serves many students in Oregon, Oregon is not part of the college's official service district). Another 7% come from elsewhere in Washington State (including Clark Co.), and about 1% come from other out of state locations.



Source: Data Express (Registration Office); mapquest.com (map)

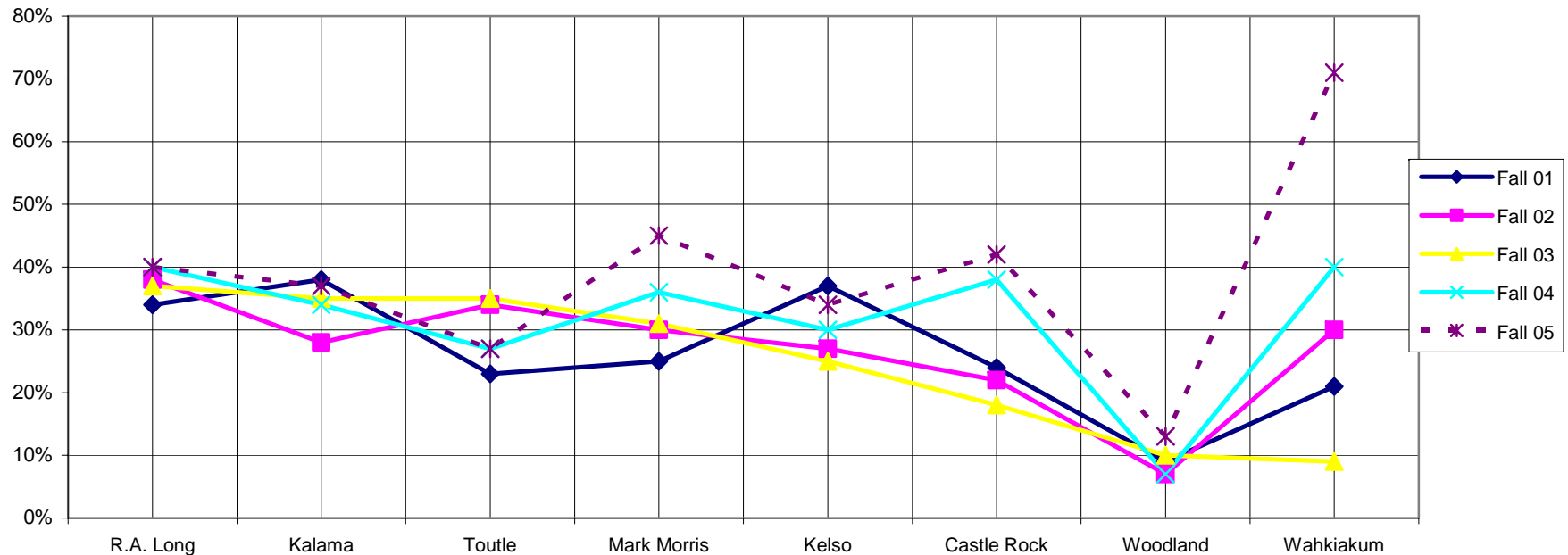
Longview	98632	1968	47.2%
Kelso	98626	865	20.7%
Castle Rock	98611	267	6.4%
Kalama	98625	140	3.4%
Woodland	98674	140	3.4%
Rainier (OR)	97048	112	2.7%
Clatskanie (OR)	97016	91	2.2%
Cathlamet	98612	66	1.6%
St. Helens (OR)	97051	37	1.0%
Silver Lake	98645	36	0.9%
Toutle	98649	28	0.7%
Battle Ground	98604	23	0.6%
Winlock	98596	20	0.5%
Toledo	98591	20	0.5%
La Center	98629	20	0.5%
Other Washington State		267	6.4%
Other Out of State		47	1.1%

ENROLLMENT OF HIGH SCHOOL GRADUATES

Proportion of Local High School Seniors Who Enroll at LCC

	R.A. Long	Kalama	Toutle	Mark Morris	Kelso	Castle Rock	Woodland	Wahkiakum	Total
Fall 2001	53/155=34%	16/42=38%	9/39=23%	53/213=25%	106/285=37%	22/92=24%	10/107=9%	8/39=21%	277/972=29%
Fall 2002	53/141=38%	14/50=28%	13/38=34%	62/209=30%	74/272=27%	18/83=22%	7/105=7%	12/40=30%	253/938=27%
Fall 2003	58/155=37%	22/62=35%	15/43=35%	63/203=31%	79/321=25%	13/71=18%	10/98=10%	4/43=9%	264/996=27%
Fall 2004	56/140=40%	22/64=34%	11/41=27%	76/211=36%	97/325=30%	26/69=38%	7/105=7%	17/42=40%	312/997=31%
Fall 2005	61/154=40%	23/62=37%	13/49=27%	83/185=45%	107/313=34%	42/101=42%	14/106=13%	12/17=71%	355/987=36%

Source: Data Express (KR-HISCHO1)



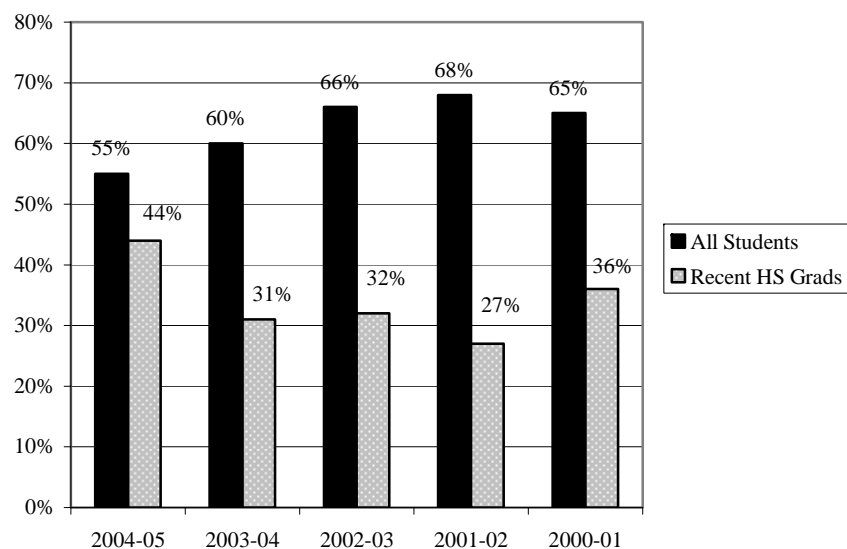
Source: Data Express (Registration Office—see above)

PREPARATION OF INCOMING STUDENTS

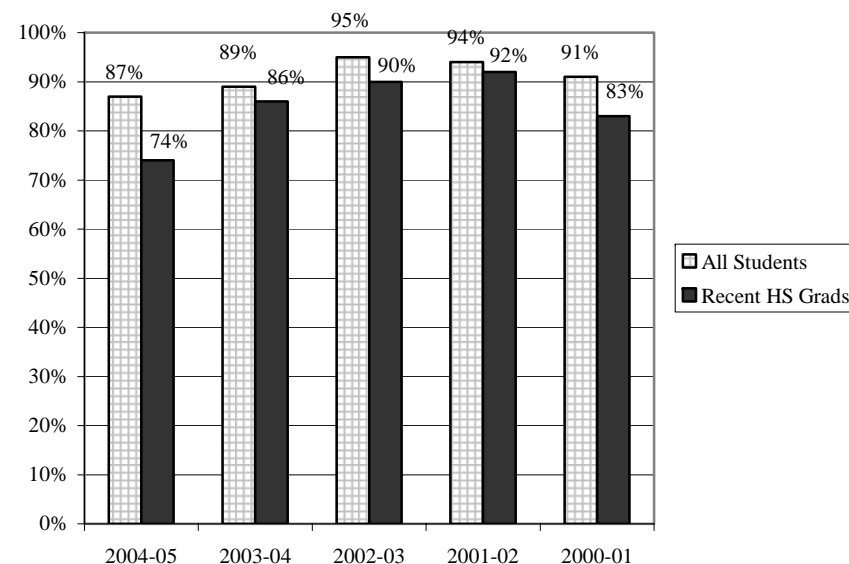
The majority of students entering LCC take placement exams in reading, writing and mathematics. The results of the exams help determine the level at which students begin their coursework. Analysis for all years based on cut scores adopted 7/2004.

	% of Students Underprepared in Reading, Writing or both		% of Students Underprepared in Mathematics	
	All Students	Recent High School Graduates	All Students	Recent High School Graduates
2004-05	55%	44%	87%	74%
2003-04	60%	31%	89%	86%
2002-03	66%	32%	95%	90%
2001-02	68%	27%	94%	92%
2000-01	65%	36%	91%	83%

Students Underprepared in Reading, Writing or Both



Students Underprepared in Math



Source: Data Express WH-ASSET, Analyzed in Data Warehouse linked to Student Table; analyzed with LCC Score Ranges and Recommendations dated 07/06/2004; 2004-05 scores analyzed with 6/1/2005 scores. Each year represents levels of preparation for students who entered LCC during the specific academic year (year quarter actual start).

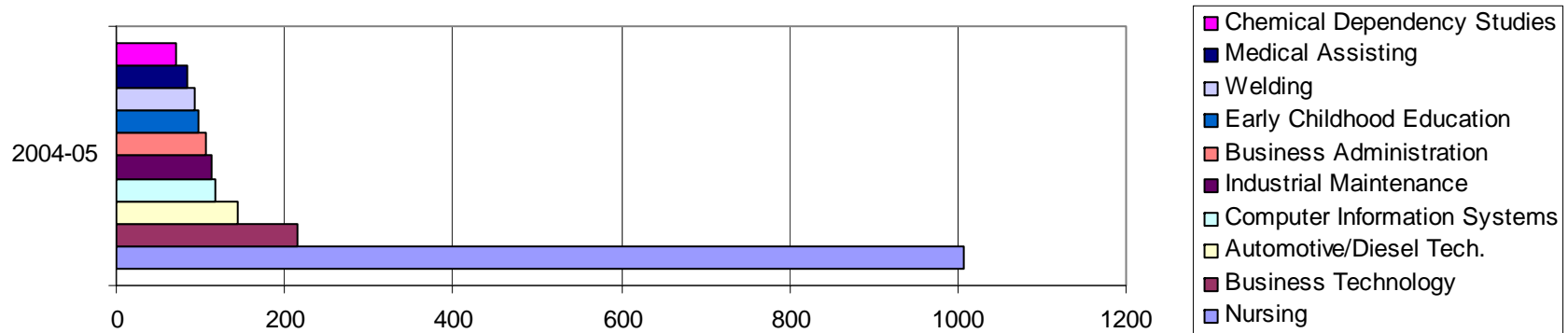
TOP 10 MAJOR AREAS OF STUDY

Academic Transfer represents the largest group of “majors” at LCC, with 1736 in 2003-04, and 1911 in 2004-05. The following chart depicts the top ten majors within the professional/technical areas. Note: Figures include both intended and actual majors. Entry requirements and enrollment limitations, such as in nursing, affect the number of students actually in the program.

Academic Year 2003-04	# of Students
1. Nursing	883
2. Business Technology	259
3. Automotive/Diesel Technology	199
4. Industrial Maintenance	166
5. Business Management/Administration	144
6. Computer Information Systems	134
7. Early Childhood Education	110
8. Fire Science Technology	108
9. Medical Assisting	81
10. Welding	75

Academic Year 2004-05	# of Students
1. Nursing	1006
2. Business Technology	216
3. Automotive/Diesel Technology	144
4. Industrial Maintenance	113
5. Computer Information Systems	117
6. Business Management/Administration	107
7. Early Childhood Education	97
8. Welding	93
9. Medical Assisting	85
10. Chemical Dependency Studies	70

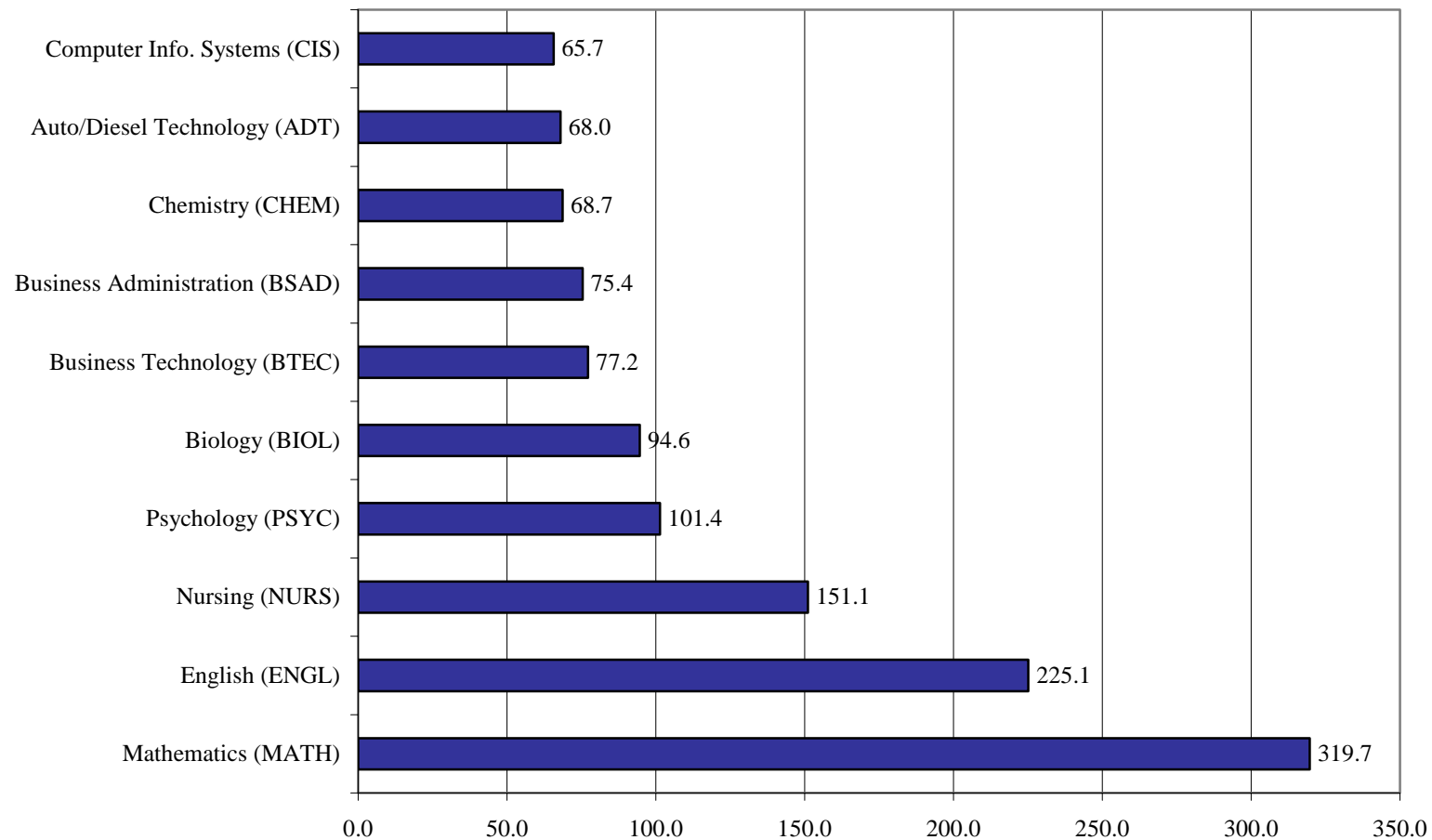
Top 10 Professional/Technical Majors at LCC: 2004-05



Source: SBCTC Data Warehouse, Student Table Program CIP for Professional/Technical programs, Student Table, Intent where “B” for academic transfer

TOP 10 FTE GENERATING DISCIPLINES

The following ten disciplines accrued the most annual FTE in 2004-05. One Annual FTE (Full Time Equivalent) is equal to 45 enrolled college credits.

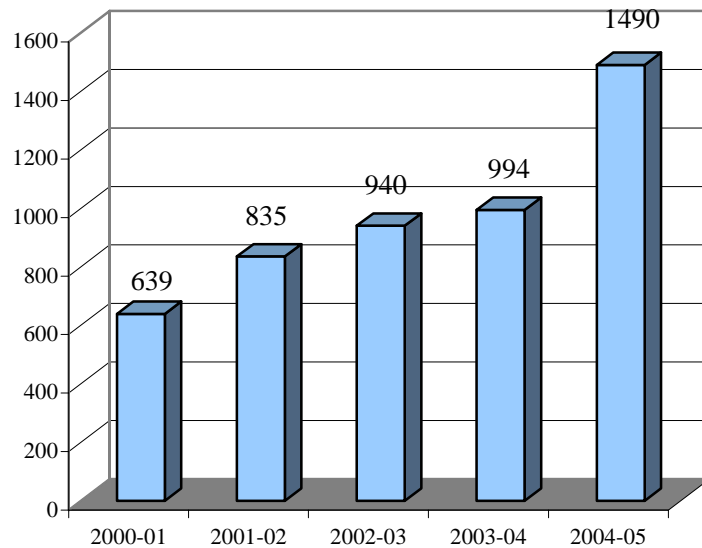


Source: SBCTC Data Warehouse, Class Table, FTES_Total/3.

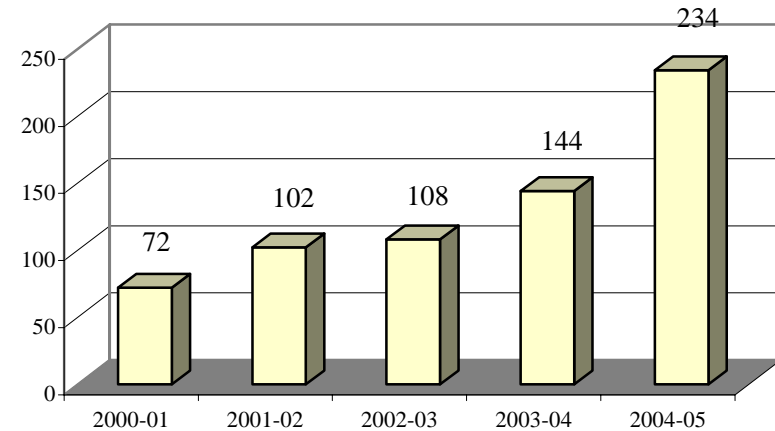
DISTANCE EDUCATION

Distance Education includes on-line, correspondence, and telecourses.

Distance Education Enrollment



Number of Distance Ed. Classes Offered



During 2004-05, Distance Education classes were offered in the following disciplines:

- Accounting
- Art
- Astronomy
- Business
- Chemistry
- Computers
- Early Childhood Educ.
- Earth Science
- English
- Geology
- Health
- History
- Individual Development
- Mathematics
- Music
- Nursing
- Philosophy
- Psychology
- Sociology
- Spanish
- Speech

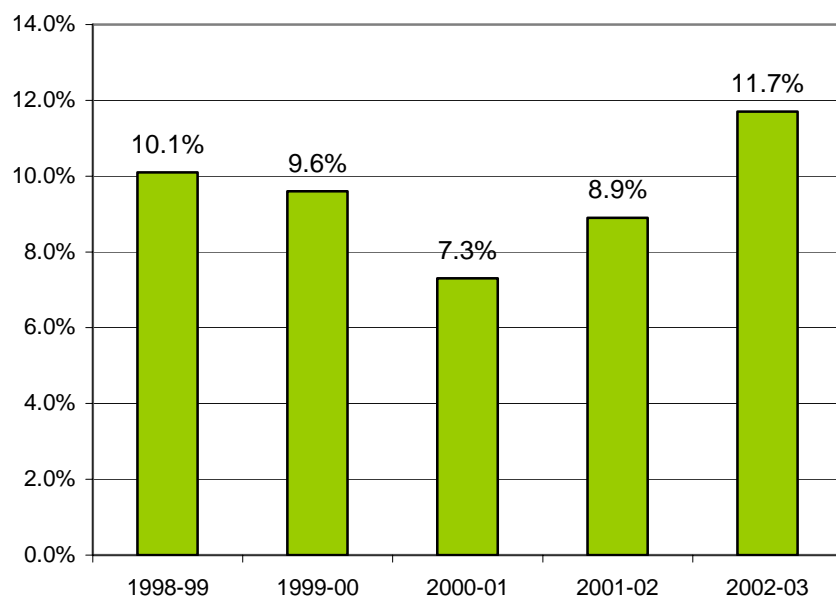
Types of Distance Education: 2004-05		
	# of Classes	Headcount
Telecourse	31	274
Correspondence	29	258
On-line	174	958
TOTAL	234	1490

Source: SBCTC Data Warehouse, Transcript Table, Class Table for DIST_ED code.

FINANCIAL AID

The following is a summary of Financial Aid awards and information. The Cohort Default Rate is the percent of Title IV borrowers entering repayment in a given year who are in default on their loans (source: U.S. Department of Education).

Cohort Default Rate



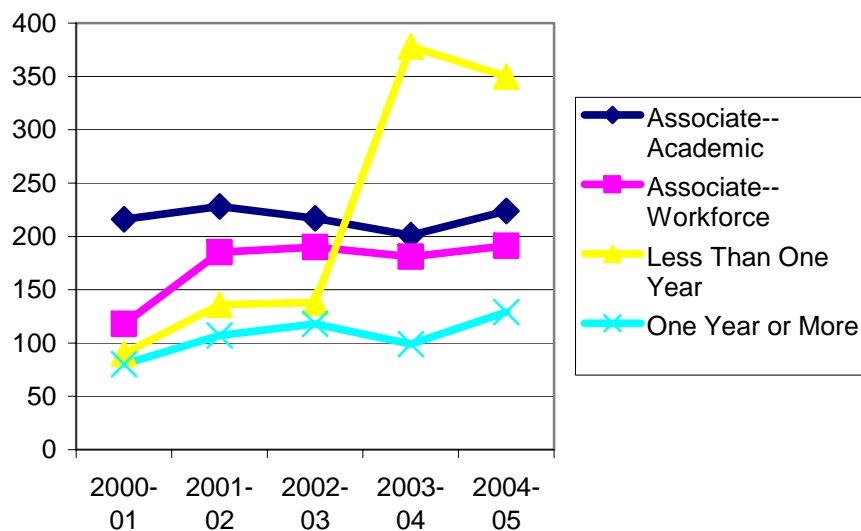
Pell Grant Maximum & Cost of Attending College		
	Pell Grant Max. (% ~)	Cost of Attending (% ~)
2001	\$3,300 (5.6%)	\$10,701 (2.2%)
2002	\$3,750 (13.6%)	\$11,100 (3.7%)
2003	\$4,000 (6.7%)	\$11,646 (4.6%)
2004	\$4,050 (1.3%)	\$12,810 (9.9%)
2005	\$4,050 (0.0%)	\$13,356 (4.3%)

Summary of Financial Aid Awards: 2004-05		
GRANTS	Amount	# of Awards
Pell	\$3,007,765	1,247
SEOG	\$87,056	65
State Need Grant	\$1,470,646	988
Total GRANTS	\$4,565,467	2,300
LOANS	Amount	# of Awards
Stafford	\$1,359,754	576
PLUS (Parent Loans)	\$40,000	8
Total LOANS	\$1,399,754	584
OTHER	Amount	# of Awards
Tuition Waivers	\$173,256	226
Tuition Assistance	\$144,468	213
Total OTHER	\$317,724	439
SCHOLARSHIPS	Amount	# of Awards
LCC Foundation	\$218,561	251
LCC Booster	\$25,924	60
Other Scholarships	\$90,358	76
Total SCHOLARSHIPS	\$334,843	387
WORKSTUDY	Amount	# of Awards
STATE on Campus	\$550,108	255
STATE off Campus	\$117,522	41
FEDERAL	\$100,924	258
TANF	\$151,640	72
Total Workstudy	\$920,194	626
Total Aid Dispersed	\$7,537,982	4,336

DEGREES AND CERTIFICATES AWARDED

AWARD	2000-01	2001-02	2002-03	2003-04	2004-05
Associate degrees (transfer)	216	228	217	201	224
Associate in Applied Science (AAS)	118	185	190	181	191
Certificates/Completions (1 Year +)	80	107	118	99	129
Certificates/Completions (< 1 Year)	90	136	138	378	350
Subtotal	504	656	663	859	894

Source: LCC Registration Office



Source: Data Warehouse—Completion and Student Tables

Characteristics of Graduates		
2004-2005 Degree Completers Only		
Age	Number	Percent
18 or below	23	7.4%
19-24	139	44.6%
25-34	78	25%
35-49	58	18.6%
50+	14	4.5%
AVERAGE AGE OF DEGREE COMPLETING GRADUATES: 28.0		
Ethnicity	Female	Male
African American	0	0
Native American	3	3
Asian/Pacific Islander	5	3
Hispanic	2	3
Ethnicity unknown	17	8
Caucasian	175	100
TOTAL	202 (63.3%)	117 (36.7%)

Source: Data Warehouse—Student and Completion Tables

TRANSFER INFORMATION

Transfers from LCC for 4-Year Institutions in Washington: 2003-2004

School	# Students	Percent
Wash. State U. – Vancouver	79	42%
Wash. State U. – Pullman	51	27%
The Evergreen State College	8	4%
Western Washington U.	16	8%
Central Washington U.	20	11%
University of Washington	7	4%
Eastern Washington U.	7	4%
TOTAL	189	100%

Academic Success of LCC Transfer Students at Washington Baccalaureate Institutions: 2004

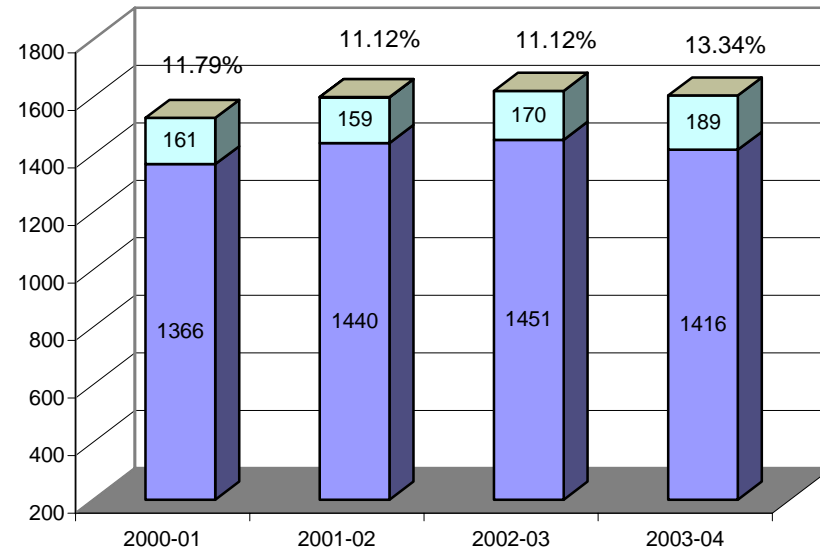
School	Average GPA
Washington State University	3.20
Western Washington University	3.06
Central Washington University	3.00
University of Washington	3.12

Transfer Student Enrollment

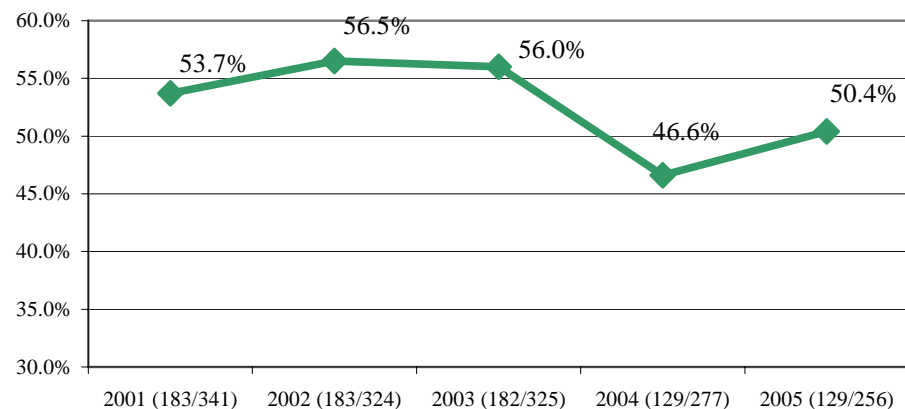
Year	Headcount
2000-01	1910
2001-02	1892
2002-03	1920
2003-04	1930
2004-05	1911

Source: Transfer Monitoring Report, SBCTC Data Warehouse

Academic Transfer Rate (2004-05 data not yet available)



Fall to Fall Persistence of New Transfer Students



EMPLOYMENT DATA

Estimated Employment Rates For LCC Completers

	3-year rolling average: 1999-00, 2000-01, 2001-02			3-year rolling average: 2000-01, 2001-02, 2002-03		
	# of students	# employed	Rate	# of students	# employed	Rate
Accounting Technician	33	29	86.5%	41	36	87.8%
Administration of Justice	11	10	90.9%	16	14	87.5%
Automotive Technology	48	39	80.4%	59	51	86.4%
Business Management	88	69	78.8%	114	89	78.1%
Business Technology						
Administrative Asst/Support	62	42	68.2%	77	56	72.7%
Medical Specialties	27	23	85.2%	33	25	75.8%
Legal Specialties	5	3	60.0%	6	4	66.7%
Chemical Dependency	23	18	79.5%	34	27	79.4%
Computer Info. Systems	96	74	77.2%	207	168	81.2%
Diesel/Heavy Equipment	94	81	86.2%	106	91	85.8%
Early Childhood Education	31	24	78.3%	31	25	80.6%
Electronics Technology	47	39	83.6%	76	62	81.6%
Fire Science	39	29	75.0%	71	59	83.1%
Industrial Maintenance	40	34	85.6%	41	34	82.9%
Machine Trades	35	28	78.6%	40	33	82.5%
Medical Assisting	47	37	79.6%	58	46	79.3%
Nursing						
Nursing Assistant/Aide	76	62	81.9%	64	49	76.6%
Practical Nursing	22	20	88.9%	24	22	91.7%
Associate Degree Nursing	105	98	92.9%	155	146	94.2%
Welding	48	41	85.4%	69	58	84.1%

Source: Data Linking Outcomes Assessment (DLOA) database, Office of Institutional Research

Adjusted Wage Rate Summary

	1999-2000			2000-2001			2001-2002			2002-2003		
	Lo	Hi	Median	Lo	Hi	Median	Lo	Hi	Median	Lo	Hi	Median
Accounting Technician	\$5.82	\$23.66	\$9.62	\$7.00	\$18.20	\$9.21	\$7.60	\$16.13	\$9.78	\$8.04	\$23.71	\$10.72
Administration of Justice	\$5.67	\$29.60	\$9.27	\$7.69	\$23.88	\$10.15	\$7.33	\$36.27	\$15.11	\$7.42	\$20.73	\$13.87
Automotive Technology	\$5.98	\$62.58	\$10.38	\$7.25	\$19.17	\$10.28	\$7.01	\$19.30	\$9.04	\$7.47	\$19.15	\$11.55
Business Management	\$5.49	\$37.79	\$10.20	\$6.96	\$30.27	\$12.40	\$7.03	\$21.88	\$10.96	\$7.11	\$59.05	\$13.04
Business Technology												
Administrative Asst/Support	\$6.21	\$18.40	\$9.38	\$7.01	\$13.22	\$10.07	\$9.52	\$10.75	\$10.14	\$7.29	\$25.20	\$9.62
Medical Office/Admin	\$6.21	\$16.25	\$9.48	\$8.09	\$13.34	\$10.26	\$7.04	\$26.70	\$10.26	\$7.17	\$11.48	\$10.12
Legal Asst/Admin	\$6.21	\$18.40	\$9.38	\$7.01	\$13.22	\$13.12	\$9.52	\$10.75	\$10.14	\$12.12	\$14.22	\$13.17
Chemical Dependency	\$5.52	\$21.88	\$10.11	\$7.03	\$28.55	\$10.03	\$7.19	\$16.45	\$10.00	\$7.27	\$18.17	\$10.02
Computer Info. Systems	\$5.55	\$53.54	\$10.74	\$7.03	\$53.81	\$14.68	\$7.09	\$40.44	\$11.79	\$7.11	\$53.51	\$19.40
Diesel/Heavy Equipment	\$5.62	\$30.26	\$14.10	\$6.91	\$30.53	\$15.45	\$7.99	\$50.36	\$16.55	\$8.38	\$18.76	\$13.27
Early Childhood Education	\$5.89	\$22.43	\$9.94	\$6.98	\$18.95	\$9.10	\$6.98	\$25.29	\$9.73	\$7.10	\$20.86	\$10.23
Electronics Technology	\$6.33	\$35.53	\$16.45	\$7.26	\$20.49	\$11.28	\$7.24	\$27.47	\$14.76	\$7.31	\$43.32	\$13.82
Fire Science	\$5.86	\$32.43	\$11.45	\$6.97	\$94.49	\$12.07	\$7.30	\$55.63	\$19.47	\$7.33	\$47.33	\$19.40
Industrial Maintenance	\$7.10	\$36.52	\$27.90	\$11.80	\$37.71	\$19.60	\$11.97	\$25.44	\$21.41	\$7.48	\$44.42	\$17.13
Machine Trades	\$5.70	\$31.62	\$13.20	\$6.96	\$32.83	\$14.57	\$7.46	\$31.89	\$13.89	\$10.51	\$36.60	\$19.04
Medical Assisting	\$5.47	\$20.16	\$9.65	\$7.00	\$27.73	\$10.98	\$7.31	\$29.85	\$11.24	\$8.12	\$28.09	\$11.36
Nursing												
Nursing Assistant/Aide	\$5.62	\$21.11	\$7.58	\$6.74	\$17.72	\$8.62	\$7.01	\$13.83	\$8.57	\$7.67	\$33.43	\$9.89
Practical Nursing	\$10.97	\$28.58	\$13.03	\$14.50	\$24.62	\$15.34	\$7.60	\$15.90	\$14.55	\$8.78	\$18.37	\$15.50
Associate Degree Nursing	\$6.21	\$44.63	\$18.36	\$7.56	\$27.46	\$20.95	\$8.06	\$47.99	\$22.35	\$7.63	\$47.38	\$21.46
Welding	\$5.85	\$100.86	\$13.91	\$7.15	\$34.74	\$13.81	\$6.96	\$26.54	\$11.35	\$7.24	\$23.45	\$12.34

Source: Data Linking Outcomes Assessment (DLOA) database, Office of Institutional Research

TOP MAJOR AREAS FOR GRADUATES

Degree Completers Only.

Academic Year 2003-04	# of Students
Associate of Arts, AA-DTA	187
Nursing	46
Computer Information Systems	23
Business Technology	18
Business Management	14
Early Childhood Education	14
Electronics Technology	12
Automotive Technology	10
Diesel/Heavy Equipment Technology	9
Accounting Technician	6
Chemical Dependency Studies	6

Academic Year 2004-05	# of Students
Associate of Arts, AA-DTA	196
Nursing	62
Computer Information Systems	19
Diesel/Heavy Equipment Technology	16
Business Management	9
Early Childhood Education	9
Administrative Assistant	8
Electronics Technology	7
Automotive Technology	7
Fire Science	7
Accounting Technician	5

Source: SBCTC Data Warehouse, Completions Table, Program CIP

LICENSURE INFORMATION

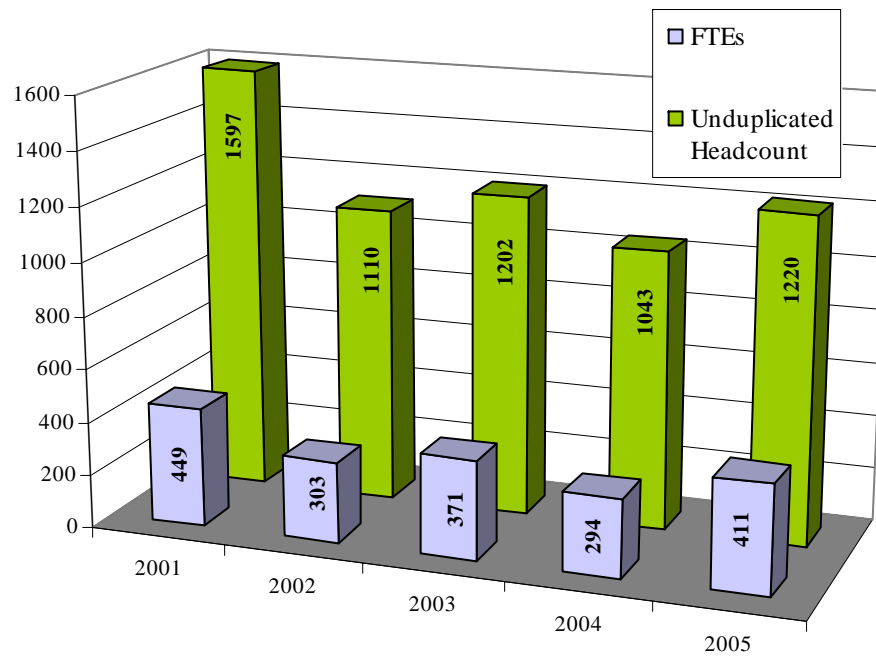
Nursing: NCLEX Pass Rates		Welding: WABO Pass Rates
Practical Nurse	Registered Nurse	
1997 = 100%	1997 = 95%	<p>Between 2002 and 2005, 98% (74/75) Welding students passed the WABO test. During the same time period, only 87.8% (36/41) of non-students passed.</p>
1998 = 100%	1998 = 93%	
1999 = 97%	1999 = 90%	
2000 = 100%	2000 = 92%	
2001 = 100%	2001 = 97%	
2002 = 100%	2002 = 90%	
2003 = 100%	2003 = 87%	
2004 = 98%	2004 = 90%	

Source: Professional/Technical Monitoring Report

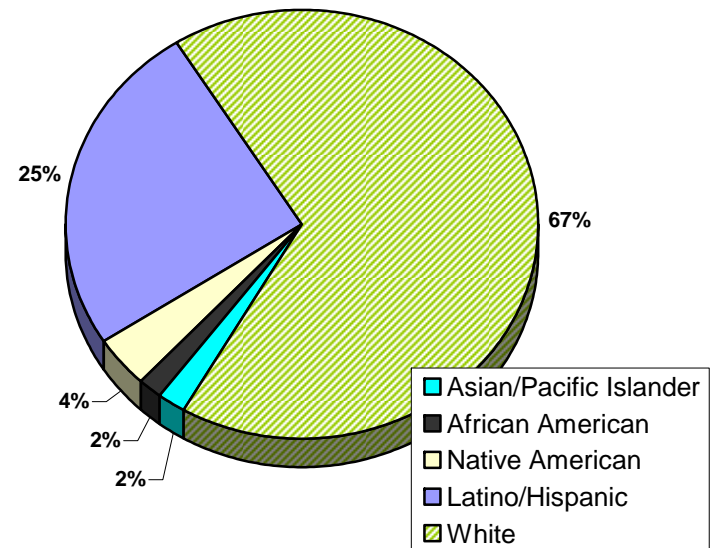
BASIC SKILLS

Enrollments in basic skills include Adult Basic Education (ABE), English as a Second Language (ESL), and high school graduation equivalency (GED).

**Basic Skills Enrollment
(Unduplicated Headcount and FTEs)
2001 – 2005**



**Ethnicity of Adult Basic Education
(ABE) Students: 2004-05**

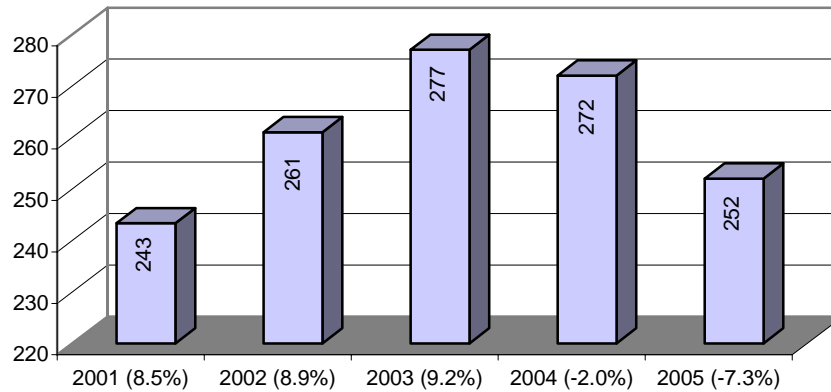


Source: Data Warehouse, Stuclass Table, sum (CR_Equiv/45) where CIP like "32*" and not in ("320201") and not in ("320205") and not in ("320206") and not in ("320207")

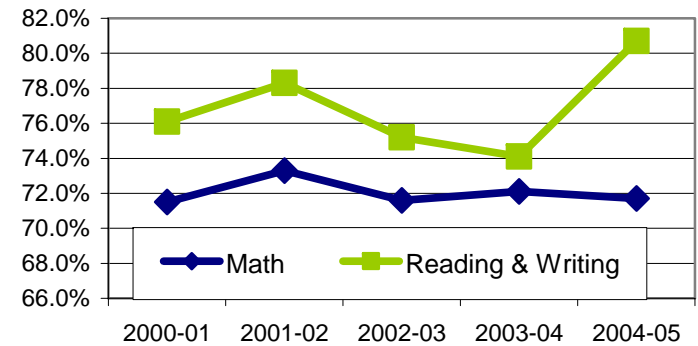
PRE-COLLEGE

Pre-College includes courses below college level in Mathematics, Reading and Writing (English).

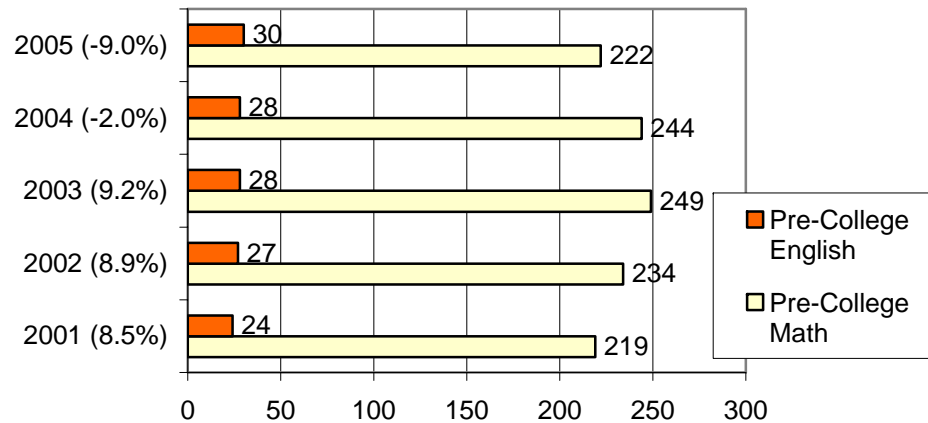
**Pre-College Annualized FTE
All Funding Sources: 2001-2005**



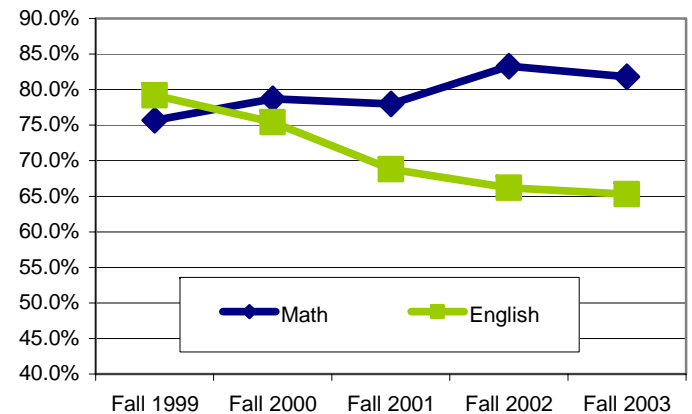
**Passing Rates of Pre-College Math and English Students
(Duplicated Headcount)**



**Pre-College English and Math Annualized FTE
All Funding Sources: 2001-2005**



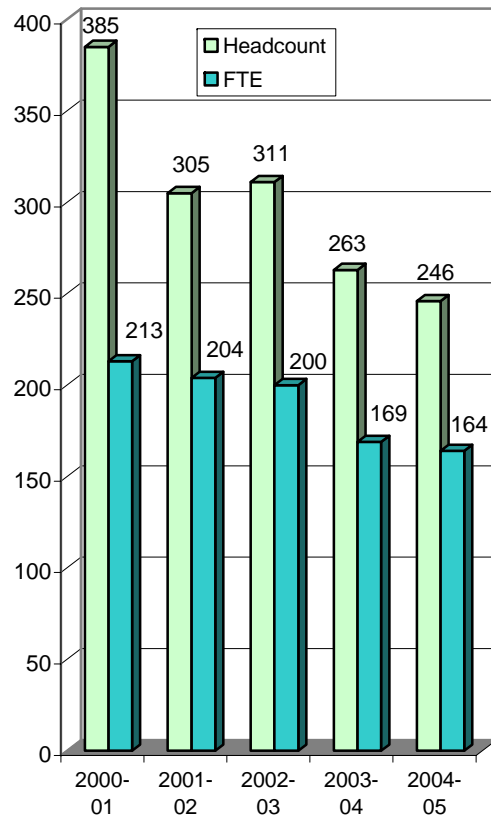
**Passing Rates of Pre-College Math and Reading & Writing
Students in College Level Math and English (fall to fall cohorts*)**



Source: Basic Skills and Developmental Education Monitoring Report. *Please note: data for the Fall 2004 cohort will be available after fall quarter 2005.

RUNNING START

Running Start Unduplicated Headcount



Source: Data Express, KR-FPS Where fee pay status =54 Academic Performance-Transcripts Table (note: grades of W, I, N, P, R excluded; also lab sections and other grades of "*" excluded from % passed calculation--number enrolled is a duplicated count)

Running Start and All Students Academic Performance Comparison

Discipline	Running Start Students			All Other Students		
	Number Enrolled	Passed with C or above	% Passed	Number Enrolled	Passed with C or above	% Passed
Administration of Justice	17	15	88%	131	105	80%
Anthropology	8	8	100%	115	97	84%
Art	77	60	78%	570	504	88%
Astronomy	10	10	100%	54	50	93%
Biological Sciences	41	33	80%	713	583	82%
Business Administration	35	31	89%	627	555	89%
Business Technology	16	16	100%	929	757	81%
Chemistry	47	34	72%	552	479	87%
Computer Info. Systems	31	26	84%	678	567	84%
College Success	24	19	79%	221	170	77%
Drama	12	12	100%	123	112	91%
Economics	51	36	71%	152	130	86%
English	274	212	77%	1542	1194	77%
Environmental Science	11	10	91%	129	120	93%
French	33	30	91%	41	32	78%
Geology	9	7	78%	57	48	84%
Human Development	13	13	100%	353	262	74%
History	84	61	73%	281	221	79%
Health	15	15	100%	373	324	87%
Humanities	12	11	92%	152	144	95%
Math	137	107	78%	2418	1823	75%
Music	58	55	95%	287	274	95%
Oceanography	9	6	67%	35	21	60%
Physical Education	127	117	92%	574	547	95%
Philosophy	13	12	92%	166	143	86%
Physics	8	8	100%	87	85	98%
Political Science	85	73	86%	151	139	92%
Psychology	61	55	90%	801	716	89%
Sociology	24	17	71%	341	298	87%
Spanish	61	48	79%	327	265	81%
Speech	58	54	93%	379	353	93%
Welding	6	6	100%	244	197	81%
ALL DISCIPLINES	1474	1222	83%	13877	11556	83%

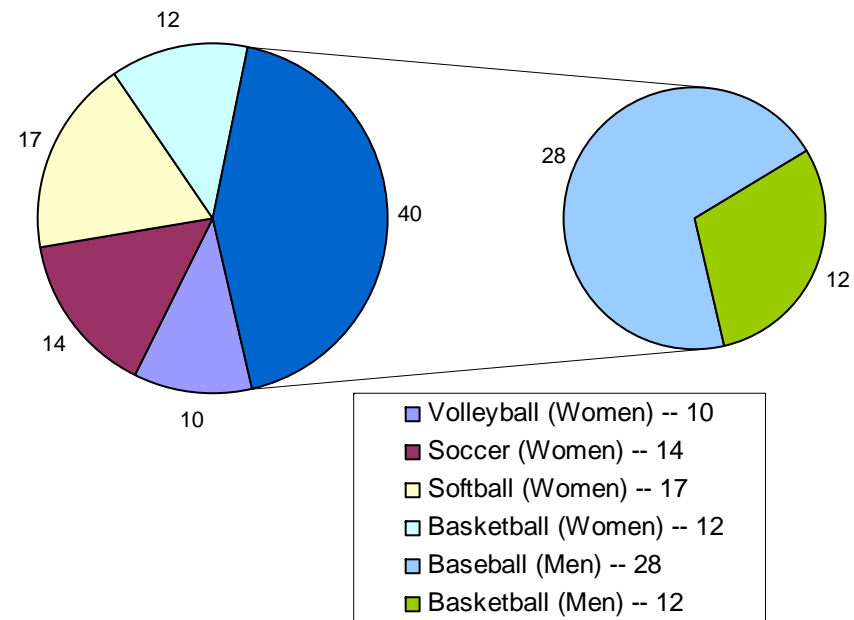
ATHLETICS

	WESTERN DIVISION CHAMPIONS													
YEAR	1992	1993	1994	1995	1996	1997	1998	1999	2000	2001	2002	2003	2004	2005
Baseball (Men)								✓	✓	✓	✓		✓	✓
Basketball (Men)	✓	✓	✓	✓		✓							✓	✓
Basketball (Women)			✓	✓									✓	✓
Soccer (Women)														
Softball (Women)*		✓						✓	✓	✓	✓	✓	✓	✓
Volleyball (Women)	✓	✓			✓					✓				✓

*Only team in any sport in NWACC history to win six or more conference titles in a row

ATHLETIC TEAM GRADE POINT AVERAGES					
	2001	2002	2003	2004	2005
Baseball (Men)	2.74	2.80	2.71	2.78	2.80
Basketball (Men)	2.45	2.51	2.66	2.83	2.46
Basketball (Women)	2.95	2.80	2.50	2.91	3.18
Soccer (Women)	2.99	2.90	3.09	2.66	2.69
Softball (Women)	2.86	2.55	2.78	2.93	2.87
Volleyball (Women)	2.97	2.74	2.95	2.93	2.77
OVERALL TEAM GPA	2.81	2.73	2.76	2.83	2.81

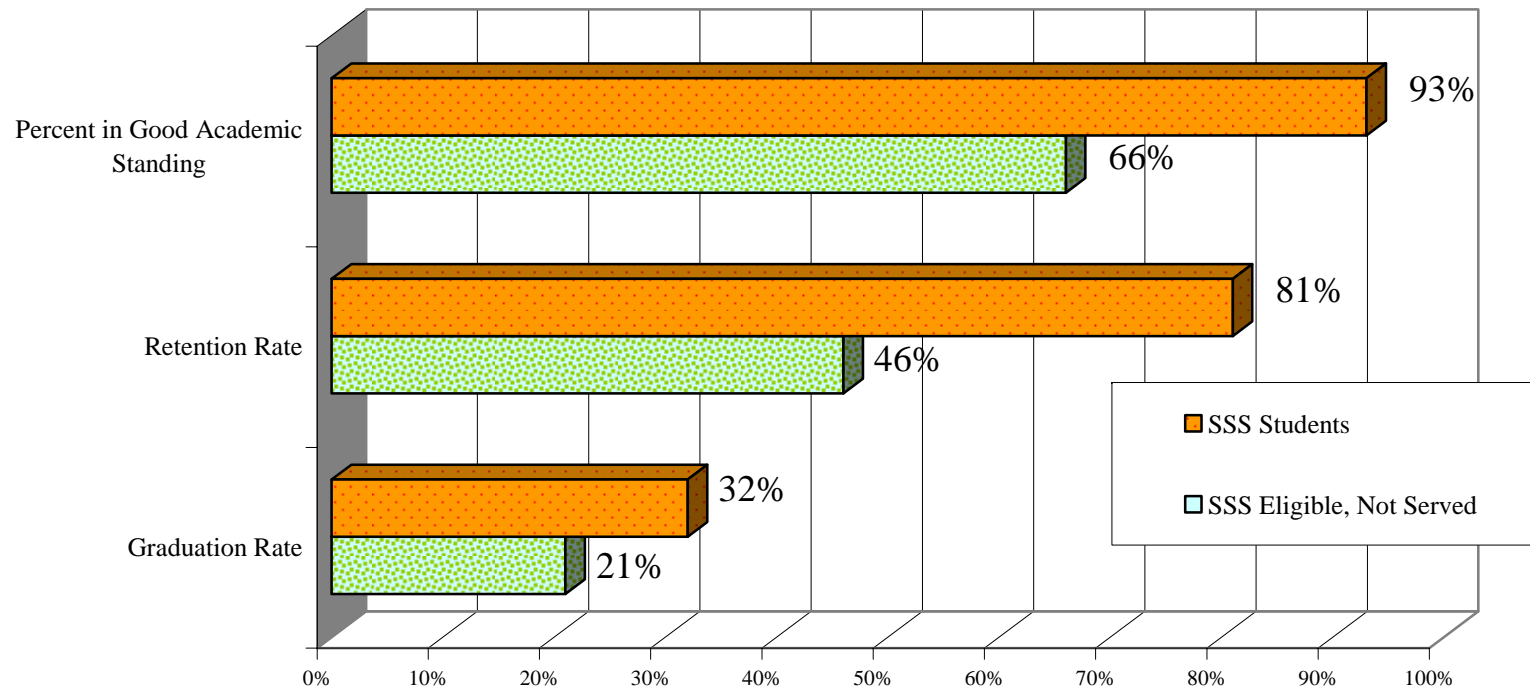
LCC ATHLETIC PARTICIPATION 2004-05
(WOMEN: 53 – MEN: 42)



STUDENT SUPPORT SERVICES

Student Support Services (SSS) is a federal program, funded by the United States Department of Education. SSS has been active on the LCC campus for more than 20 years, and has served over 2,000 students since 1978. Students are eligible to participate in this program if neither parent earned a Bachelor's degree, or if they are low income, or have a disability. The program serves 220 students per year, out of thousands of potentially eligible students. Good academic standing is defined as a 2.0 or better cumulative GPA.

Success Rates of Student Support Services Students vs. SSS Eligible Students Not Served (2004-05)

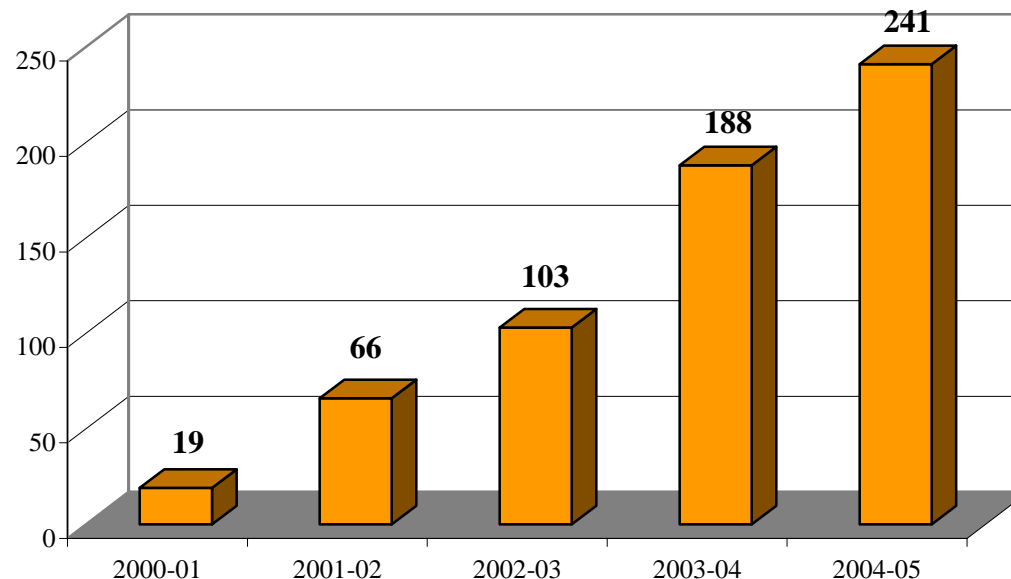


Source: LCC Student Support Services Office, Data Warehouse for Eligible not served

Tech Prep links high school and college courses to provide a seamless pathway of career preparation leading to employment. By participating in Tech Prep students can begin earning their Associate in Applied Science Degree at LCC while still in high school. Graduates of LCC's professional-technical programs who began their studies as Tech Prep students often complete their programs in less time and are well prepared to enter a competitive job market both well educated and prepared for a high paying job.

**Total Number of Students
who have Earned Articulated
Credit at LCC**

2001-02	121
2002-03	562
2003-04	383
2004-05	608



	2001			2002			2003			2004			2005		
	LCC	HS	%	LCC	HS	%	LCC	HS	%	LCC	HS	%	LCC	HS	%
Castle Rock	1	1	100%	1	1	100%	0	2	0%	4	12	33%	8	8	100%
Kalama	0	0	0%	0	1	0%	4	5	80%	4	15	27%	6	17	35%
Kelso	7	11	64%	4	7	57%	17	23	74%	21	42	50%	38	117	32%
Mark Morris	3	8	38%	7	17	41%	6	26	23%	18	56	32%	25	67	37%
RA Long	5	5	100%	5	9	56%	7	11	64%	18	40	45%	20	90	22%
Toutle	1	1	100%	1	1	100%	0	1	0%	1	2	50%	3	13	23%
Wahkiakum	0	0	0%	1	2	50%	2	6	33%	4	6	67%	2	8	25%
Woodland	0	0	0%	2	2	100%	0	1	0%	0	0	0%	0	1	0%
Total	17	26	65%	21	40	53%	36	75	48%	70	173	40%	102	321	32%

Source: LCC Tech Prep Office

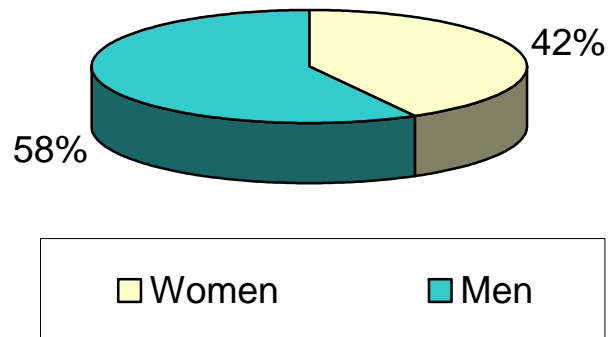
PERSONNEL

Number of LCC Employees—All Funding Sources

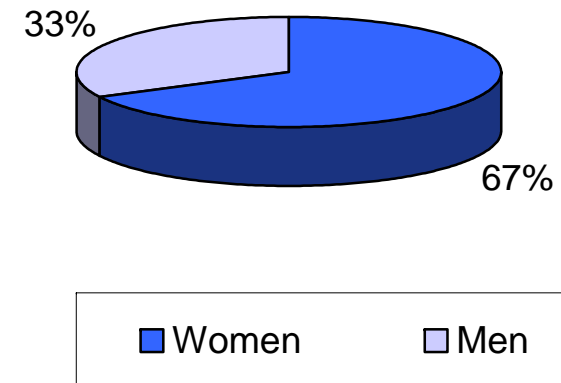
Fall Quarter	FTEF	Percent of Faculty FTE (FTEF) that is Full-Time	FT Faculty	PT Faculty	Administrators	Exempt Staff	Classified Staff	Total Employees
2000	129.89	53.1%	74	80	17	30	127	328
2001	137.94	54.7%	75	84	18	40	142	359
2002	136.03	54.1%	77	92	13	48	139	369
2003	129.81	56.5%	79	85	14	46	138	362
2004	129.38	59.1%	81	89	14	42	145	371

Characteristics of Faculty—Full-Time and Part-Time—All Funding Sources

Full-Time Faculty by Gender: Fall 2004



Part-Time Faculty by Gender: Fall 2004

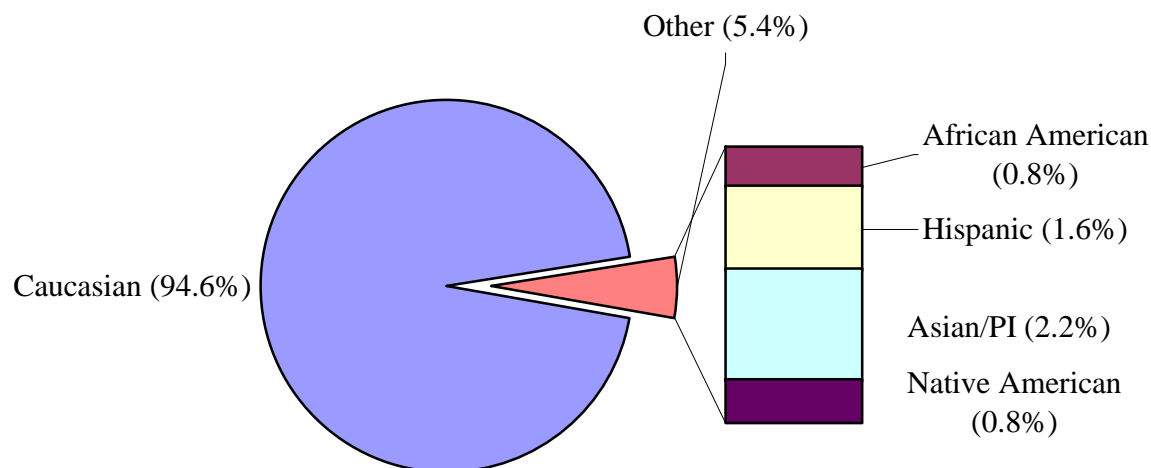


Source: SBCTC Data Warehouse (CLASS Table) for FTEF (FTEF_Total and where Employment_Stat =1 for FT), Employee Table

GENDER & ETHNICITY OF LCC PERSONNEL

Characteristics of LCC Employees, by Classification, for Fall 2004 – All Funding Sources

	Total	Women	Men	African American	Hispanic	Asian/PI	Native American	Caucasian	Disabled	Vietnam Veteran	Disabled Veteran
Full-Time Faculty	81	34	47	1	3	2	1	74	3	7	0
Administrative	14	6	8	0	1	0	0	13	0	3	1
Exempt	42	31	11	1	0	1	0	40	1	2	0
Classified	145	113	32	0	1	4	2	138	2	2	0
Part-Time Faculty	89	60	29	1	1	1	0	86	0	0	0
TOTAL	371	244	127	3	6	8	3	351	6	14	1
TOTAL (%)	100%	65.8%	34.2%	0.8%	1.6%	2.2%	0.8%	94.6%	1.6%	3.8%	0.3%



Source: SBCTC Data Warehouse, Employee Table

OPERATING REVENUES & EXPENDITURES

Operating Revenues & Expenditures—Dollars and Percent (unrestricted)

	2000-01 Actual		2001-02 Actual		2002-03 Actual		2003-04 Actual		2004-05 Actual	
REVENUES	Dollars	%	Dollars	%	Dollars	%	Dollars	%	Dollars	%
Tuition & Fees	\$2,815,438	17.8%	\$3,139,840	20.8%	\$3,216,401	21.4%	\$3,693,869	24.1%	\$3,607,821	22.9%
State Appropriation	\$9,705,190	68.2%	\$10,242,291	68.0%	\$10,059,847	67.1%	\$9,928,816	64.8%	\$10,519,713	66.9%
Local Unrestricted	\$1,135,869	8.0%	\$1,086,306	7.2%	\$1,130,244	7.5%	\$1,019,849	6.7%	\$997,790	6.3%
Local Dedicated	\$578,260	4.1%	\$604,768	4.0%	\$594,648	4.0%	\$692,933	4.5%	\$612,253	3.9%
TOTAL REVENUES	\$14,234,757	100%	\$15,073,205	100%	\$15,001,140	100%	\$15,335,467	100%	\$15,737,577	100%
EXPENDITURES	Dollars	%	Dollars	%	Dollars	%	Dollars	%	Dollars	%
Instruction	\$6,701,950	46.8%	\$7,149,562	47.8%	\$6,975,393	47.7%	\$7,277,595	47.6%	\$7,678,234	48.5%
Community Education	\$62,643	0.4%	\$76,856	0.5%	\$62,775	0.4%	\$75,246	0.5%	\$60,980	0.4%
Academic Support	\$910,511	6.4%	\$923,307	6.2%	\$883,193	6.0%	\$909,120	5.9%	\$913,626	5.8%
Libraries	\$400,704	2.8%	\$402,262	2.7%	\$415,653	2.84%	\$414,352	2.7%	\$390,175	2.5%
Student Services	\$1,702,154	11.9%	\$1,725,125	11.5%	\$1,907,574	13.1%	\$1,934,464	12.6%	\$2,086,449	13.2%
Institutional Support	\$2,954,126	20.6%	\$3,034,385	20.3%	\$2,647,278	18.1%	\$2,872,610	18.8%	\$2,905,715	18.3%
Operation of Plant	\$1,598,563	11.2%	\$1,647,512	11.0%	\$1,721,328	11.8%	\$1,817,548	11.9%	\$1,787,311	11.3%
TOTAL EXPENDITURES	\$14,330,651	100%	\$14,959,009	100%	\$14,613,194	100%	\$15,300,935	100%	\$15,822,490	100%

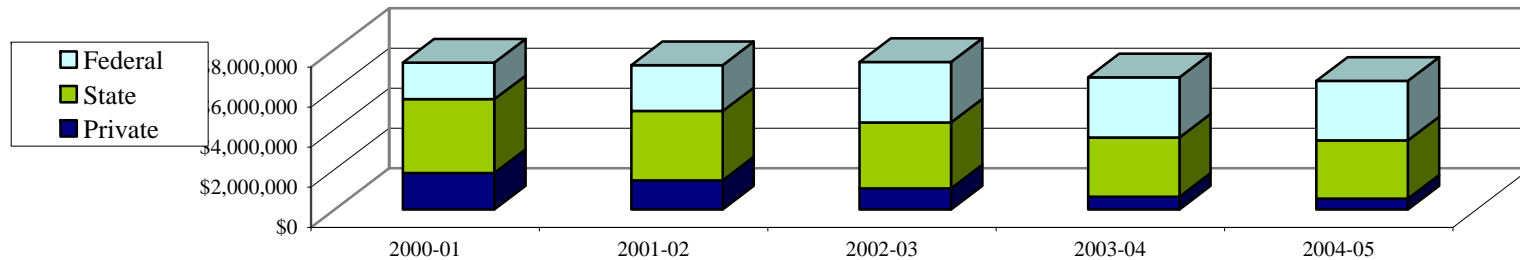
Operating refers to Instruction and General accounts. These exclude auxiliary services, restricted funds, and grant funds.
 Source: BA1204/BA1213/BA1212/SBCTC Allocation Schedule (LCC Business Office)

GOVERNMENT & PRIVATE PROGRAM GRANTS

Government and Private Program Grants (restricted)

	2000-01 Actual	2001-02 Actual	2002-03 Actual	2003-04 Actual	2004-05 Actual
REVENUES					
Private	\$1,821,905	\$1,455,953	\$1,050,863	\$648,649	\$564,069
State	\$3,689,873	\$3,463,711	\$3,297,155	\$2,958,227	\$2,905,114
Federal	\$1,831,672	\$2,292,949	\$3,034,053	\$3,003,033	\$2,983,326
TOTAL REVENUES	\$7,343,450	\$7,212,613	\$7,382,071	\$6,609,909	\$6,452,509
EXPENDITURES					
Instruction	\$2,370,263	\$2,457,121	\$2,365,576	\$2,041,068	\$1,866,491
Academic Support	\$27,281	\$20,908	\$39,371	\$37,184	\$45,206
Libraries	\$37,279	\$31,671	\$35,158	\$22,662	\$31,007
Student Services	\$4,026,661	\$4,288,429	\$4,523,340	\$4,171,317	\$4,223,478
Institutional Support	\$228,667	\$381,155	\$265,042	\$234,685	\$237,178
Operation of Plant	\$256,712	\$179,820	\$227,197	\$212,548	\$159,754
TOTAL EXPENDITURES	\$6,946,863	\$7,359,104	\$7,455,684	\$6,719,464	\$6,563,114

Government and Private Program Grants: 2001-2005



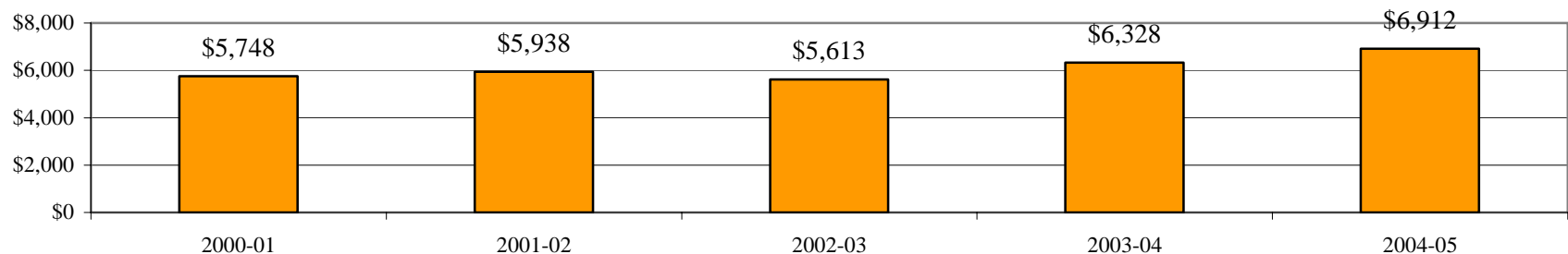
Source: BA1204/BA1213/BA1212/SBCTC Allocation Schedule (LCC Business Office). Note: excludes Student Financial Assistance.

COST PER FTE STUDENT

Cost per FTE (Full Time Equivalent) Student (note: reimbursement rates differ depending on type of FTE)

	2000-01 Cost Per FTE	2001-02 Cost Per FTE	2002-03 Cost Per FTE	2003-04 Cost Per FTE	2004-05 Cost Per FTE
EXPENDITURES					
Instruction	\$2,688	\$2,838	\$2,679	\$3,010	\$3,354
Community Education	\$25	\$30	\$24	\$31	\$27
Academic Support	\$365	\$367	\$339	\$376	\$399
Libraries	\$161	\$160	\$160	\$171	\$170
Student Services	\$683	\$685	\$733	\$800	\$912
Institutional Support	\$1,185	\$1,204	\$1,017	\$1,188	\$1,269
Operation of Plant	\$641	\$654	\$661	\$752	\$781
TOTAL EXPENDITURES	\$5,748	\$5,938	\$5,613	\$6,328	\$6,912
FTE Enrollment	2,493	2,519	2,604	2,418	2,289
State Reimbursement per FTE*	\$3,600	\$3,900	\$3,600	\$4,100	\$4,200

Cost per FTE (Full Time Equivalent) Student—Reimbursement rate for general enrollment



Source: BA1204/BA1213/BA1212/SBCTC Allocation Schedule (LCC Business Office)

FACILITIES

Acres, Buildings, Gross Square Footage and Library Resources

Acres of Land.....	35
Number of Buildings.....	27
Gross Square Footage.....	365,568

Volumes in Library.....	43,058
Periodicals in Library.....	176
Videos in Library.....	3,744

Replacement Cost of College Facilities: July 2005

Building	Abrv.	Rep. Value \$
Administration	ADM	\$1,400,657
Admissions Center	ADC	\$4,298,446
Alan Thompson Library	LIB	\$5,663,964
Applied Arts	AAR	\$6,840,840
BB Concessions	BBC	\$21,333
Batting Barn	BTB	\$18,882
Campus Services	CMS	\$881,529
Carpentry Shop	CRP	\$16,272
Don Talley	DTV	\$5,284,100
Faculty Office B	FOB	\$83,655
Fine Arts	FAB	\$2,588,746
Green House	GHS	\$33,810
Gym	GYM	\$3,575,026
Head Start Storage	HSS	\$8,496

Building	Abrv.	Rep. Value \$
Home/Family Life Storage	HFS	\$3,054
Home/Family Life Center	HFL	\$1,661,230
Information Tech. Center	ITC	\$180,804
Instructional Office Bldg.	IOB	\$1,267,801
International Center	INC	\$106,000
Main	MAN	\$11,365,242
Physical Science	PSC	\$1,728,000
Head Start Administration	RSV	\$324,870
Science	SCI	\$2,165,422
Steam Plant	SPL	\$1,400,794
Student Center	STC	\$6,307,216
New Head Start Bldg (East)	NHSB	\$867,692
Vocational	VOC	\$6,435,586
College Grand Total		\$64,529,467

Source: Replacement Cost Computations/MM5128 VER010, July 2005 (LCC Business Office)

SQUARE FOOTAGE

Square Footage by Construction Project

Building	Year Built	Gross Sq. Footage	Total Rooms	Building	Year Built	Gross Sq. Footage	Total Rooms
Administration (ADM)	1960	11,642	50	Home/Family Life Storage (HFS)	1989	96	1
Admissions Center (ADC)	1960	18,612	66	Home/Family Life Center (HFL)	1990	17,400	54
Alan Thompson Library (LIB)	1977	28,999	37	Information Tech. Center (ITC)	1970	1,904	11
Applied Arts (AAR)	1960	26,736	68	Instr. Office Building (IOB)	1960	7,623	38
BB Concessions (BBC)	1988	264	1	International Center (INC)	1972	1,850	3
Batting Barn (BTB)	1988	2,220	1	Main (MAN)	1970*	40,515	68
Campus Services (CMS)	1995	18,148	39	Head Start-East (HSE)	2000	5,935	9
Carpentry Shop (CRP)	1981	403	1	Physical Science (PSC)	1971	9,551	20
Don Talley (DTV)	1981	51,400	69	Headstart Administration (RSV)	1957	3,892	13
Faculty Office B (FOB)	1970	1,088	9	Science (SCI)	1960	6,994	18
Fine Arts (FAB)	1960	17,519	32	Steam Plant (SPL)	1982	1,723	1
Green House (GHS)	1979	605	1	Student Center (STC)	1993	34,304	68
Gym (GYM)	1960	23,635	20	Vocational (VOC)	1960	32,250	58
Headstart Storage (HSS)	1992	260	1	College Grand Total		365,568	757

*Original date of construction for Main was September, 1950 (oldest building on campus)

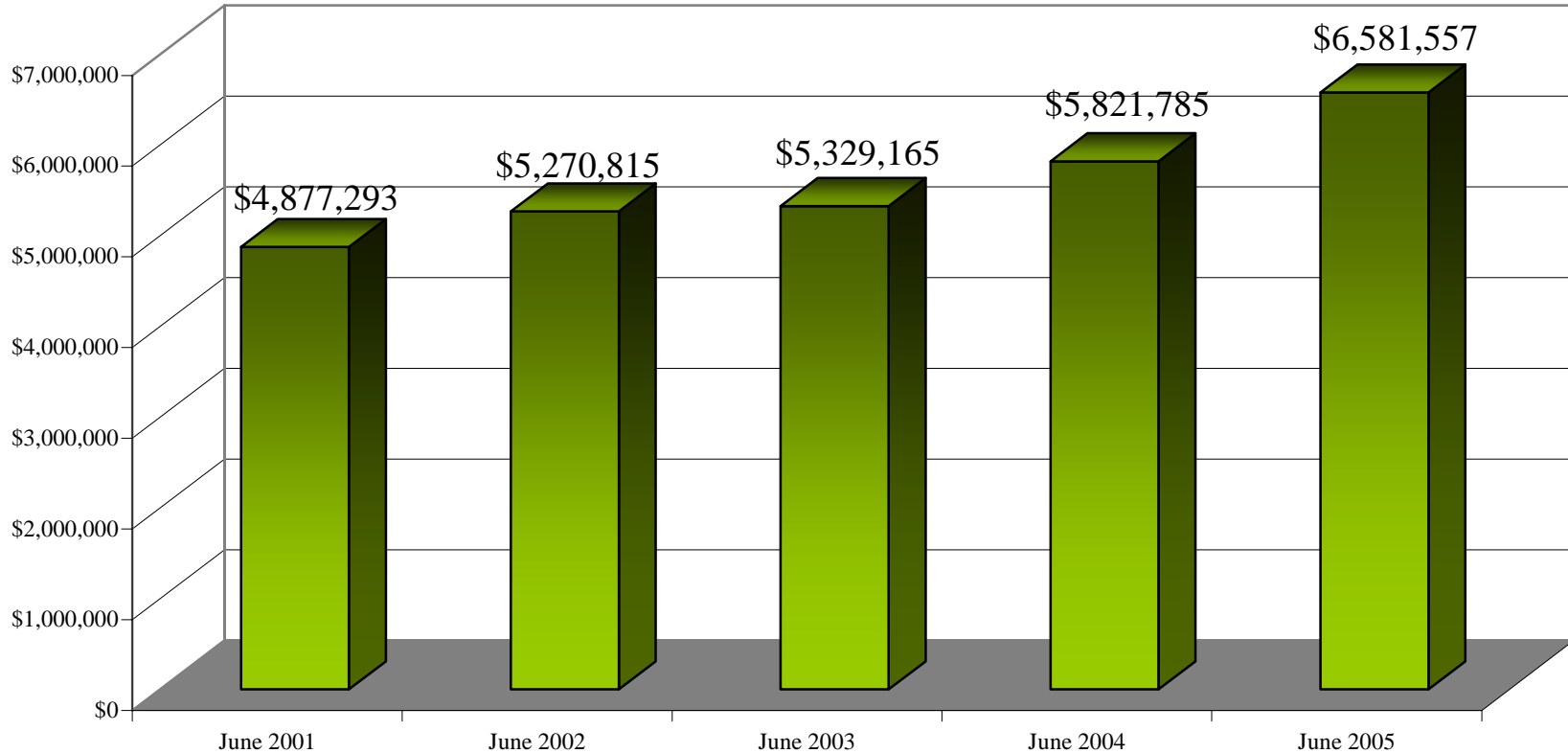
Source: LCC Campus Services

LCC FOUNDATION NET ASSETS

Since 1976, the Lower Columbia College Foundation has been:

- Providing financial supplements where public funds are not sufficient
- Gathering public support for enhancement of educational opportunities for LCC students
- Strengthening the teaching, learning and cultural environment of LCC and the community it serves

Net Assets



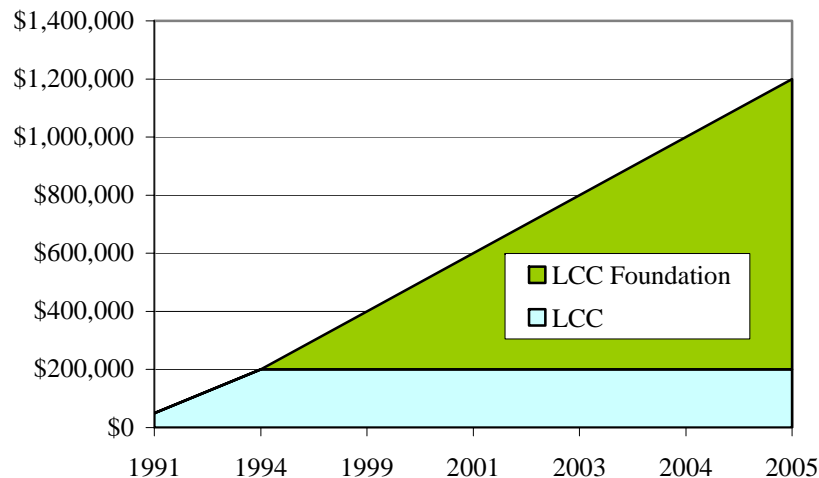
Source: LCC Foundation Office

LCC FOUNDATION SUPPORT

Every year, the Lower Columbia College Foundation uses a percentage of its net assets to support programs at the College. Investment earnings on net assets determine how much is available in any given year.

Total Amount of Program Support to LCC

Year	Dollar Amount	% of Net Assets
2001	\$338,312	6.9%
2002	\$312,044	5.9%
2003	\$406,842	7.6%
2004	\$320,585	5.5%
2005	\$360,430	5.5%



2004-05 Support to LCC

	Amount	Percent
Scholarships	\$135,525	38%
Grants	\$63,380	18%
Program Support	\$85,045	24%
Library	\$13,899	4%
Other	\$62,581	17%
Total	\$360,430	100%

At \$1,200,000, the LCC Exceptional Faculty Fund is the largest of any single community college in Washington. Both the LCC and LCC Foundation figures, pictured at left, include a 100% match from the State of Washington.



Source: LCC Foundation Office

LOCAL & POPULATION DATA

	Cowlitz County	Wahkiakum County	Washington State	United States
Total Population (2005 Estimate)	95,900	3,900	6,256,400	295,160,302
Total Population Change (2003-2005)	+1%	+4%	+2%	+2%
Total Population Change (2002-2003)	+1%	-2%	+1%	+1%
Total Population Change (1990-2000)	+13%	+15%	+21%	+13%
Total Population Change (1980-1990)	+3%	-13%	+18%	+10%
Total Population Change (1970-1980)	+16%	+7%	+21%	+11%
Average Annual Wage per Job (2003)	\$32,465	\$26,982	\$39,181	\$37,130
Unemployment Rate, seasonally adjusted (2004)	8.9%	5.9%	6.2%	5.5%
Unemployment Rate, seasonally adjusted (2003)	10.3%	7.9%	7.5%	6.0%
Unemployment Rate, seasonally adjusted (2002)	10.8%	7.7%	7.3%	5.8%
Unemployment Rate, seasonally adjusted (2001)	11.0%	7.3%	6.4%	4.7%
Unemployment Rate, seasonally adjusted (2000)	7.8%	6.6%	5.2%	4.0%
Poverty Rate (2002)	13%	10%	10%	12%
Poverty Rate (1999)	14%	8%	11%	12%
Poverty Rate (1989)	13%	10%	11%	13%
Poverty Rate (1979)	11%	12%	10%	12%

Sources: Northwest Area Foundation Indicator Website (www.indicators.nwaf.org), OFM (www.ofm.wa.gov/pop/aprill/index.htm/localdata/clar.htm)

According to projections made by the Labor Market and Economic Analysis Branch of Employment Security, the following occupations are among the highest in demand in Southwest Washington:		
Little preparation (less than one month)	Short preparation (one to twelve months)	Mid-Level preparation (one to four years)
<ul style="list-style-type: none"> • Child Care Workers 	<ul style="list-style-type: none"> • Accounting and Auditing Clerks 	<ul style="list-style-type: none"> • Registered Nurses
<ul style="list-style-type: none"> • Teacher Assistants 	<ul style="list-style-type: none"> • Administrative Assistants 	<ul style="list-style-type: none"> • Electricians
<ul style="list-style-type: none"> • Nursing Aides 	<ul style="list-style-type: none"> • Medical Assistants 	<ul style="list-style-type: none"> • Welders

Source: Occupational Outlook 2002-2012: Planning for the Future. (www.workforceexplorer.com)

PARTICIPATION RATES

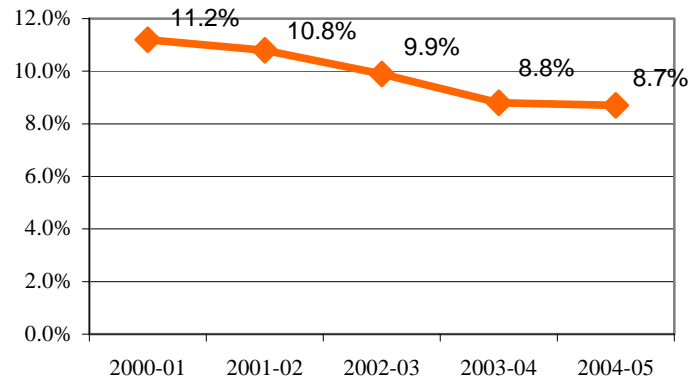
Local Service District Participation Rate

Total Student Headcount/16+ population in service district

	Student Headcount	Participation Rate
2000-01 (74,214)	8,339	11.2%
2001-02 (75,262)	8,165	10.8%
2002-03 (76,241)	7,522	9.9%
2003-04 (76,941)	6,789	8.8%
2004-05 (78,242)	6,802	8.7%

Note: LCC's service district includes Cowlitz and Wahkiakum Counties. Based on 16 and over population (www.census.gov/popest/counties/asrh/files/CC-EST2004-agesex-53.csv)

Local Service District Participation Rate (Graph)



Service District Population, People of Color

U.S. Bureau of the Census Population Estimates

	People of Color	Proportion of Population
2000 (98,934)	9,587	9.7%
2001 (99,681)	9,848	9.9%
2002 (100,525)	10,248	10.2%
2003 (100,942)	10,532	10.4%
2004 (102,094)	10,930	10.7%

Compare to the proportion of students of color attending LCC, below

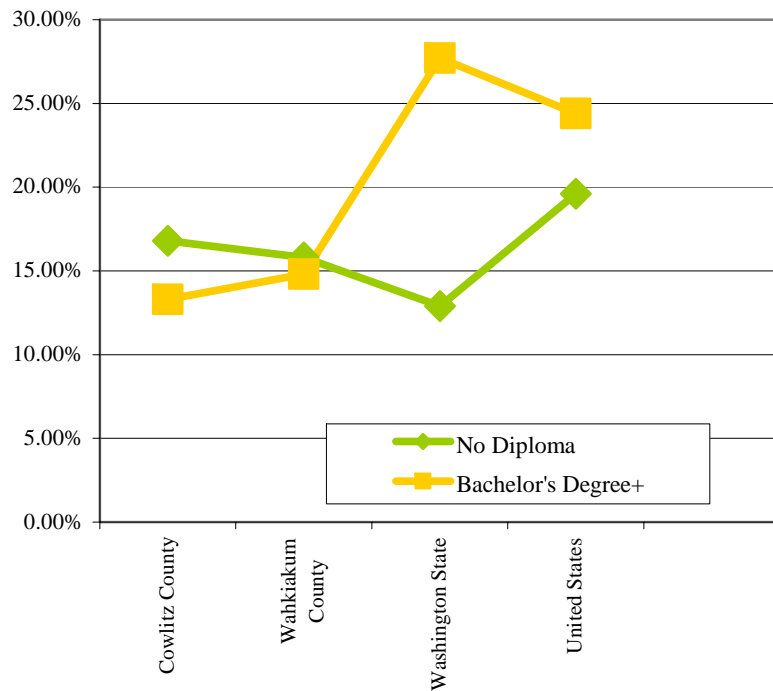
Participation Rate of Students of Color at LCC

	Students of Color	Total Student Headcount	Participation Rate
2000-01	776	8,339	9.3%
2001-02	714	8,165	8.7%
2002-03	672	7,522	8.9%
2003-04	703	6,789	10.4%
2004-05	743	6,802	10.9%

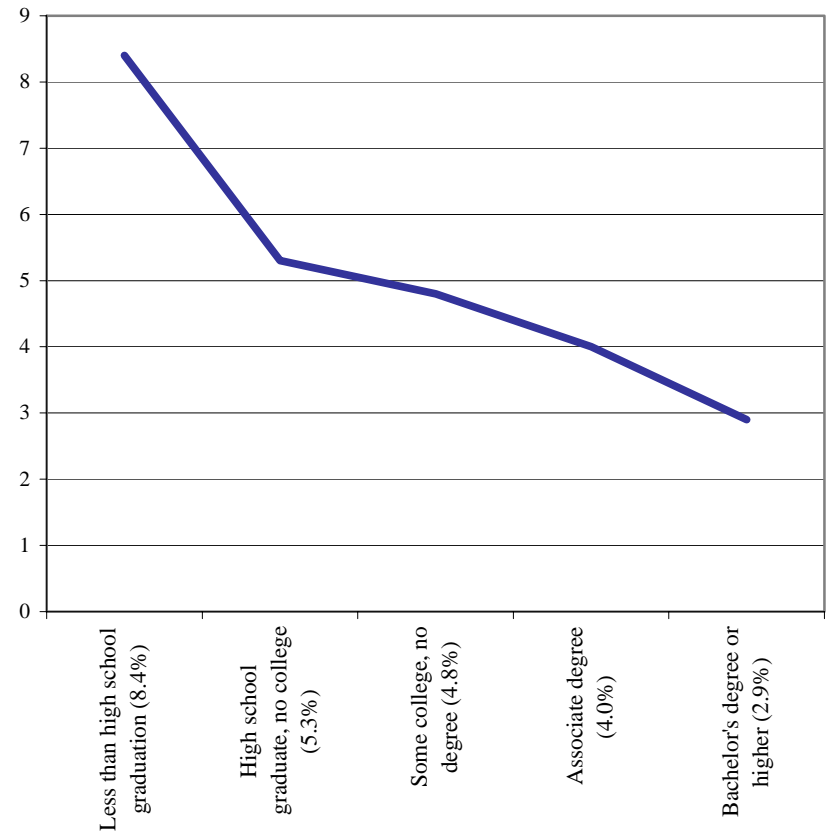
EDUCATIONAL ATTAINMENT & UNEMPLOYMENT

All figures represent persons 25 years old and over in 2000.

	Percent of population without a high school diploma (25 years old and over)	Percent of population with a bachelor's degree or higher (25+)
Cowlitz County	16.8%	13.3%
Wahkiakum County	15.8%	14.8%
Washington State	12.9%	27.7%
United States	19.6%	24.4%



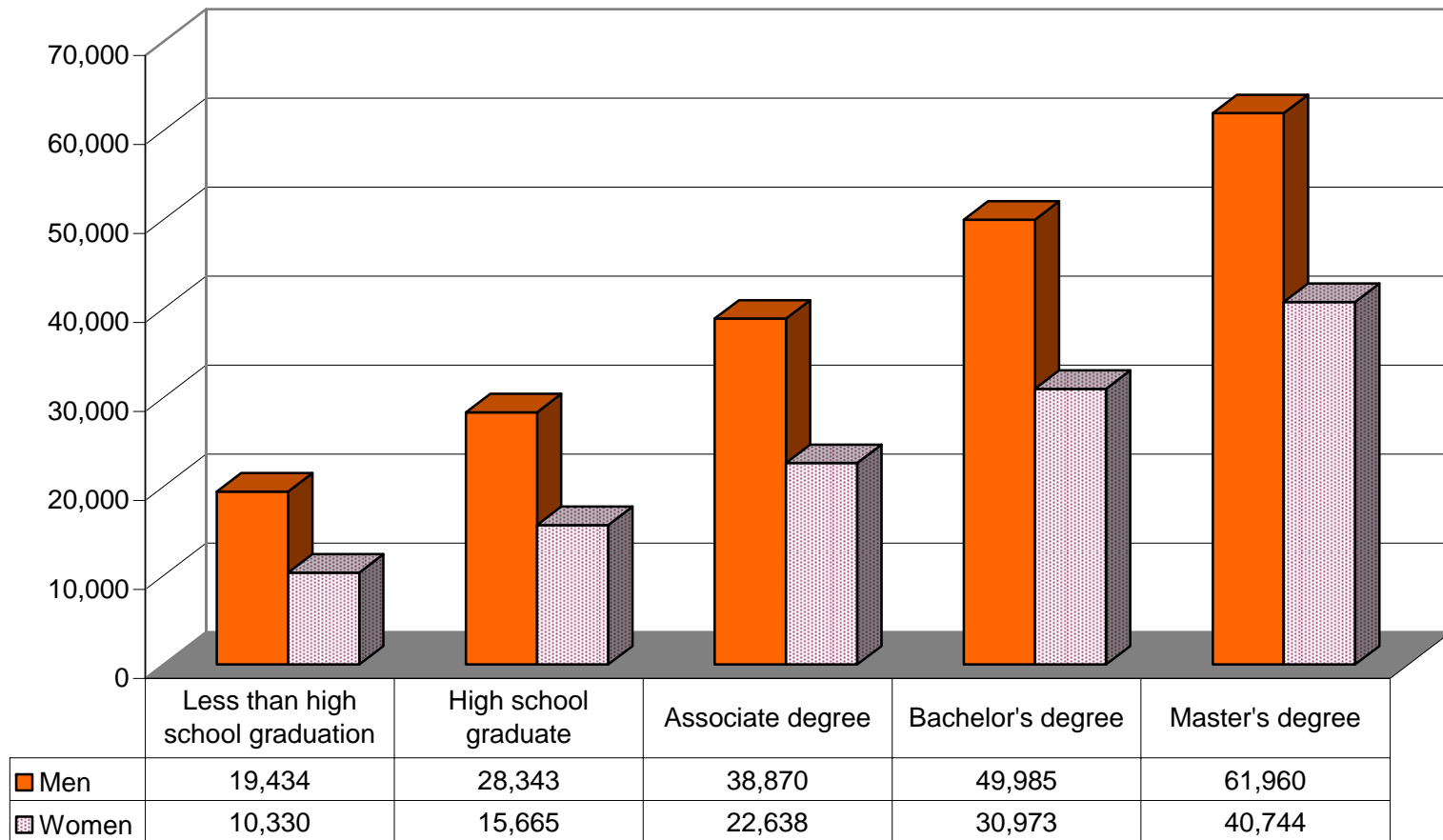
**Unemployment rate of persons 25 years old and over, by highest level of education: 2002
United States**



Source: Census Bureau, Digest of Education Statistics, www.ufps.edu

EDUCATIONAL ATTAINMENT & EARNINGS

Median annual income of persons with income 25 years old and over, by highest level of education and gender: 2001 (United States)



Source: U.S. Department of Commerce, Bureau of the Census, *Current Population Reports*, Series P-60, "Money Income in the United States: 2001."

CRIME STATISTICS

Lower Columbia College Crime Statistics

Campus Crime Statistics	1994	1995	1996	1997	1998	1999	2000	2001	2002	2003	2004
Murder/Non-negligent Manslaughter	0	0	0	0	0	0	0	0	0	0	0
Negligent Manslaughter	0	0	0	0	0	0	0	0	0	0	0
Sex Offenses – Forcible	0	0	0	0	0	0	0	0	0	0	0
Sex Offenses – Non-Forcible	0	0	0	0	0	0	0	0	0	0	0
Robbery	0	0	0	0	0	0	0	0	0	0	0
Aggravated Assault	2	3	2	1	1	0	0	0	0	1	0
Burglary	2	2	10	7	4	1	0	3	0	0	0
Motor Vehicle Theft	0	0	3	4	3	4	4	4	1	2	3
Arson	0	0	0	0	0	0	0	0	0	0	0
TOTAL	4	5	15	12	8	5	4	7	1	3	3

Arrest/Disciplinary Action/Judicial Referrals	1994	1995	1996	1997	1998	1999	2000	2001	2002	2003	2004
Illegal Weapons Possession						0	0	0	0	0	0
Drug Law Violations						0	0	0	0	0	1
Liquor Law Violations						0	0	0	0	0	0
TOTAL						0	0	0	0	0	1

Source: LCC Campus Service

- Academic Performance of Running Start Students, 22
- Academic Success of Transfer Students, 16
- Academic Transfer Rate, 16
- Academic Transfer, 3, 11
- Accounting, 3, 13, 17, 18, 19
- Accreditation, 2, 3
- Acres, 3, 31
- Administration Building, 31, 32
- Administration of Justice, 3, 17, 18
- Administrative Assistant, 17, 18, 19
- Admissions Center, 31, 32
- Adult Basic Education, 20
- Age of Graduates, 15
- Age of Students, 4
- Alan Thompson Library, 31, 32
- Allied Health, 3
- Annual Enrollment Trends, 6
- Anthropology, 3
- Applied Arts, 31, 32
- Art, 3, 13
- Associate Degrees Awarded, 15
- Astronomy, 3, 13
- Athletic Team Grade Point Averages, 23
- Athletics, 23
- Automotive/Diesel Technology, 3, 11, 12, 17, 18, 19
- Average Age of Graduates, 15
- Average Age of Students, 3, 4
- Average Annual Wage Data, 35
- Average GPA of Transfer Students, 16
- Average Wages by Education Level, 38
- Bachelor's Degree, Percent of Population, 37
- Baseball, 3, 23
- Basic Skills Students, 4, 20
- Basketball, 3, 23
- Batting Barn, 31, 32
- BB Concessions, 31, 32
- Biology, 3, 12
- Blueprint Reading, 3
- Books in Library, 31
- Brief History of LCC, 2
- Buildings, 3, 31, 32
- Business Management/Admin, 3, 11, 17, 18, 19
- Business Technology, 3, 11, 12, 17, 18, 19
- Business, 3, 13
- Campus Services Building, 31, 32
- Carpentry Shop, 31, 32
- Castle Rock High School, 9
- Census Data, 35, 36, 37
- CEO Students, 3
- Certificates Awarded, 3, 15
- Characteristics of Faculty and Staff, 26
- Characteristics of Students, 4
- Chemical Dependency Studies, 3, 17, 18, 19
- Chemistry, 3, 12, 13
- Client Customized Training Contracts, 7
- Cohort Default Rate, 14
- College Outcomes, 1
- College Success, 3

- Community Education, 7
- Computer Information Systems, 3, 11, 12, 17, 18, 19
- Computers, 7, 13
- Contract Funded FTE, 6
- Correspondence Courses Offered, 13
- Cost of Attending College, 14
- Cost per FTE Student, 30
- Credit Students, 4
- Crime Statistics, 39
- Customized Education, 7
- Day Students, 4
- Degrees and Certificates Awarded, 15
- Degrees Awarded, 3, 15
- Demographics of Faculty and Staff, 26, 27
- Demographics of Students, 4
- Developmental Education FTE, 21
- Developmental Education, 21
- Diesel Technology, 3, 17, 18, 19
- Disabled Students, 4
- Disciplines Offered at LCC, 3
- Distance Education Enrollment, 13
- Distance Education, 3, 13
- Don Talley Vocational Building, 31, 32
- Drama, 3
- Early Childhood Education, 3, 11, 13, 17, 18, 19
- Earth Science, 3, 13
- Economic Data, 35, 37
- Economics, 3
- Educational Attainment Rates, 37
- Electronics Technology, 3, 17, 18, 19
- Employees, 3, 26, 27
- Employees, Number of, 3, 26, 27
- Employment Data, 17
- Employment Rates, Estimated, 17
- Engineering, 3
- English as a Second Language, 3, 20
- English, 3, 12, 13, 21
- Enrollment of High School Graduates, 3, 9
- Enrollment of Tech Prep Students, 25
- Environmental Studies, 3
- Ethnic Breakdown of Service District, 36
- Ethnicity of Adult Basic Education Students, 20
- Ethnicity of Faculty and Staff, 27
- Ethnicity of Graduates, 15
- Ethnicity of Students, 3, 4
- Evening Students, 4
- Exceptional Faculty Fund, 34
- Facts about LCC, 3
- Faculty Office B, 31, 32
- Fall FTES by Institutional Intent, 5
- Fall Quarter Enrollment, 5
- Fall-to-Fall Persistence of Transfer Students, 16
- Family Status of Students, 4
- Female Students, 4
- Financial Aid Awards, 14
- Financial Aid, 3, 14
- Fine Arts Building, 31, 32
- Fire Science Technology, 3, 11, 17, 18, 19

- French, 3
- Food Handler Cards Issues, 7
- Foundation Net Assets, 3, 33
- Foundation Support to LCC Programs, 34
- Founded, Year, 2, 3
- FTE (Full Time Equivalent), 3, 5, 6, 21, 30
- FTE, Contract Funded, 6
- FTE, Developmental Education, 21
- FTE, State Funded, 6
- FTE, Student Funded, 6
- FTES by Institutional Intent, 5
- Full-time Students, 4
- GED Enrollment, 20
- Gender of Faculty and Staff, 27
- Gender of Graduates, 15
- Gender of Students, 4
- Geography, 3
- Geology, 3, 13
- Government and Private Program Grants, 29
- GPA of Transfer Students, 16
- Grade Point Averages for Athletes, 23
- Graduate Characteristics, 15
- Graduate Demographics, 15
- Graduation Rates for Student Support Services, 24
- Green House, 31, 32
- Gross Square Footage, 31
- Gym, 31, 32
- Head Start Administration Building, 31, 32
- Head Start Storage Building, 31, 32
- Health, 3, 13
- High Demand Careers in SW Washington, 35
- High School Completion Enrollment, 20
- High School Diploma, Percent of Population, 37
- High School Graduates, 9
- History, 3, 13
- History of LCC, 2
- Home and Family Life, 3
- Home/Family Life Center, 31, 32
- Home/Family Life Storage Building, 31, 32
- Human Development, 3
- Humanities, 3
- Individual Development, 3, 13
- Industrial Maintenance, 3, 11, 17, 18
- Instructional Office Building, 31, 32
- International Center, 31, 32
- International Students, 4
- Journalism, 3
- Kalama High School, 9
- Kelso High School, 9
- LCC Quick Facts, 3
- Library, 3, 31, 32
- Licensure Information, 19
- Links to Census & Economic Data, 35
- Local and Population Data, 35
- Low-income Students, 4
- Machine Trades, 3, 17, 18
- Main, 2, 31, 32
- Major Areas of Study, 11

- Male Students, 4
- Mark Morris High School, 9
- Mathematics, 3, 10, 12, 13, 21
- Mechanical Engineering Technology, 3
- Medical Administrative Support, 17, 18
- Medical Assisting, 3, 11, 17, 18
- Mission Statement, 1
- Music, 3, 13
- NCLEX Pass Rates, Nursing, 19
- New Head Start Building (East), 31, 32
- Non-Credit Enrollment, 7
- Non-credit Students, 4
- Non-resident Students, 4
- Number of books in Library, 31
- Number of Buildings, 2, 3, 31
- Number of Distance Education Courses Offered, 13
- Number of Employees, 3, 26, 27
- Number of Rooms per Building, 32
- Number of Students Who Transferred, 16
- Nursing, 3, 11, 12, 17, 18, 19
- NWAACC Sports Offered, 3, 23
- Oceanography, 3
- On-Line Courses, 7, 13
- Operating Budget, 3, 28
- Operating Revenues and Expenditures, 28
- Paraeducator, 3
- Participation Rate of Students of Color, 36
- Participation Rates for Athletics, 23
- Part-time Students, 4
- Pass Rates of Pre-College Students, 21
- Pass Rates of Running Start Students, 22
- Pell Grant Maximum, 14
- Periodicals in Library, 31
- Persistence of Transfer Students, 16
- Personnel, 26
- Philosophy, 3, 13
- Philosophy of LCC, 1
- Physical Education, 3
- Physical Science Building, 31, 32
- Physics, 3
- Placement Scores, 10
- Political Science, 3
- Popular Major Areas of Study, 11
- Population Data, 35
- Poverty Rates, 35
- Pre-College, 21
- Preparation in Math, 10
- Preparation in Reading and Writing, 10
- Preparation of Incoming Students, 10
- Prior Education of Students, 4
- Professional/Technical Majors, 11
- Psychology, 3, 12, 13
- Pulp and Paper Technology, 3
- Quarterly Enrollment Trends, 5
- Quick Facts, 3
- R.A. Long High School, 9
- Race and Ethnicity, Faculty and Staff, 27
- Race and Ethnicity, Students, 4

- Replacement Cost of Facilities, 31
- Residency Status, 4
- Resident Students, 4
- Retention Rates for Student Support Services, 24
- Running Start Students, 3, 4, 22
- Science Building, 31, 32
- Senior Studies, 3
- Service District Participation Rate, 36
- Service District, Defined, 3
- Soccer, 3, 23
- Sociology, 3, 13
- Softball, 3, 23
- Spanish, 3, 13
- Speech, 3, 13
- Sports Offered, 3, 23
- Square Footage, 31
- State Funded FTE, 6
- State Reimbursement Rate per FTE, 30
- Steam Plant, 31, 32
- Student Center, 31, 32
- Student Characteristics, 4
- Student Demographics, 4
- Student Funded FTE, 6
- Student Headcount, 3, 4, 5, 6
- Student Home Zip Codes, 8
- Student Support Services, 24
- Students Underprepared in Math, 10
- Students Underprepared in Reading and Writing, 10
- Tech Prep Students, 25
- Telecourses Offered, 13
- Top 10 Major Areas of Study, 11
- Toutle Lake High School, 9
- Transfer Students, 4, 16
- Transfers from LCC to 4-Year Institutions, 16
- Unduplicated Running Start Student Headcount, 22
- Unduplicated Student Headcount, 4
- Unemployed Students, 4
- Unemployment Rates, 35, 37
- Vocational Building, 31, 32
- Volleyball, 3, 23
- Volumes in Library, 31
- WABO Pass Rates, Welding, 19
- Wage Data, 18
- Wahkiakum High School, 9
- Welding, 3, 11, 17, 18, 19
- Where LCC Students Live, 8
- Woodland High School, 9
- Worker Retraining Students, 3, 4
- Workforce Training Students, 4
- Year Buildings were Built, 32
- Year Founded, 2, 3
- Zip Codes of Students, 8



Lower Columbia College, 1600 Maple Street, Longview, WA, 98632, (360) 442-2000, www.lcc.ctc.edu