

# IccFolderExplorer Manual

## Contents

Description .....	2
Running .....	2
Starting.....	2
Starting with preloaded path(s) .....	2
Using .....	3
History .....	3
Edit Settings .....	3
Path (box).....	3
Get .....	3
Remove .....	3
Open .....	3
Double-Clicking File Name.....	3
Right-Clicking File Name .....	4
Right-Clicking Folder .....	4
Command Line Keys.....	4
Screenshots .....	6
Definitions .....	6
Modifications .....	6

---

## Description

This document describes the lccFolderExplorer program.

The lccFolderExplorer is a windows program developed to allow exploring of folders with both local or alternate credentials. You can explore one to many local/network locations simultaneously.

As of Windows 7, Windows no longer allows Explorer to run under multiple credentials. This program is a workaround for that limitation.

The program will remember previous paths and provide them in a History menu. Clicking on a previous history path will load that location.

You can load multiple locations at the same time.

Double-clicking, or clicking Open on a file will open that file in a separate process/thread.

If you supply one or more 'lcc:path' options, the program will auto load those paths.

**Note:** When Microsoft Office opens files, it relies on the Internet Options - Security Zones to see if it is trusted. If you want to open Office documents that require elevated rights in network locations, you need to add the root of those network locations to your Internet Options - Security - Local Intranet sites for that profile of the account you are running as (like in lccToolBook 'Run As', or Windows Command Line 'RunAs'. See section 'Adding Trusted Sites For Alternate Credentials'

---

## Running

### Starting

- run or double-click the **lccFolderExplorer.exe**

### Starting with preloaded path(s)

- Syntax: **lccFolderExplorer.exe lcc:Path [path] ...**

- Example: `lccFolderExplorer.exe lcc:Path \\server\share$\folder`
- Example #2 (multiple paths): `lccFolderExplorer.exe lcc:Path \\server\share$\folder lcc:Path d:\folder2`

---

## Using

### History

Click to view/retrieve previous paths.

### Edit Settings

Edit your personal settings.

### Path (box)

Manually enter a path and click Get to retrieve.

### Get

Retrieve the path in the Path box.

### Remove

Remove a path from the left pane.

### Open

Open the selected file.

### Refresh

Refreshes the file listing.

### Details

Turns Details on/off for the files listed.

### Double-Clicking File Name

Open the selected file.

### Right-Clicking File Name

#### Copy File

Copy a file for pasting into a folder (see Right-Clicking Folder section).

#### Copy Filename

Copy a filename to your clipboard.

#### Delete File

Delete the selected file.

#### Rename File

Rename the selected file.

### Right-Clicking Folder

#### Paste File

Copy the selected/copied file (see Right-Clicking File Name section). If the file already exists, the program will append a # to the end of the filename until it is unique.

#### Copy Path

Copies the folder's path to your clipboard.

---

## Command Line Keys

**lcc:path** *(optional)(none to many per run)*

Will auto load the paths provided.

**Syntax**

lcc:path [tab] [..path..]

**Example**

lcc:path        \\server\share\$\folder

---

## Adding Trusted Sites For Alternate Credentials

When launching a program using alternate credentials, like with lccToolBook 'Run As', or Windows Command Line 'RunAs', the account you use needs to have network locations that need elevated rights to be listed in the Internet Options - Security - Trusted Sites.

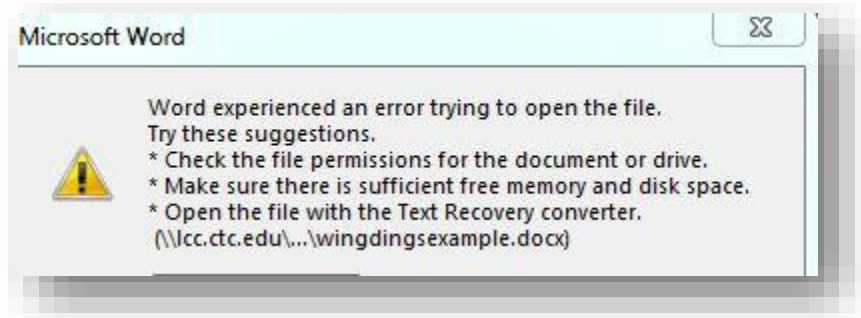
### Example Of Adding A Trusted Network Location

- Log in to the computer as the credentials you will Run As on the program
- Open: **Control Panel**
- Open: **Network and Internet**
- Open: Internet **Options**
- Choose Tab: **Security**
- Choose Zone: **Local intranet**
- Click: **Sites**
- Click: **Advanced**
- Type the path of the network location root
  - For example, if your network location is **\\ourcollege.edu\folders\folder2**
  - You might want to add the root: **\\ourcollege.edu\folders**
- Click: **Add**
- Click: **Close**
- Click: **Ok**
- Click: **Ok**

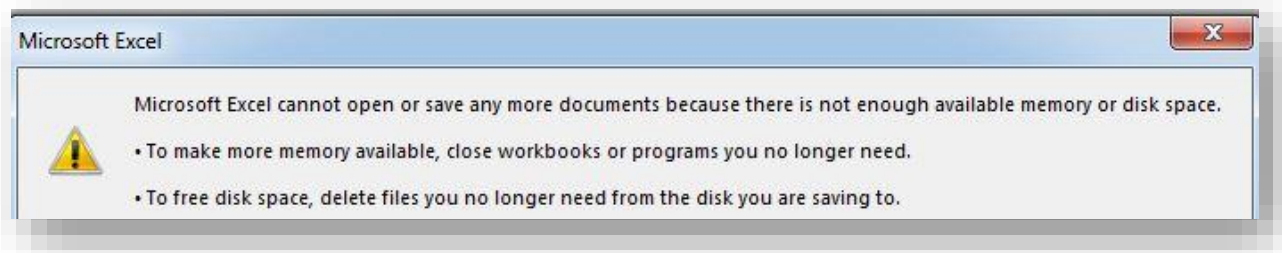
---

## Screenshots

### Screenshot #1



### Screenshot #2



---

## Definitions

**DFS** - Distributed File System

---

## Modifications

NAME	DATE	MODIFICATION
David Mielcarek	6/26/2017	Created

David Mielcarek	5/24/2018	Added Rename File, Paste File (upgrade)
-----------------	-----------	-----------------------------------------

---

End of document