

# lccToolBook Manual

## Contents

Description.....	1
lccToolBook .....	1
Installation.....	2
First Time Use.....	2
Using .....	2
Top Menu.....	3
Left Pane - Tree View Index.....	5
Right Pane - Tabs View Index.....	5
Program Parts.....	6
Definitions .....	6
Modifications.....	7

---

## Description

This document describes how to use the lccToolBook.

### **lccToolBook**

is a Windows program created to allow launching of any program on a computer. It also allows launching of URLs (websites), or any other resource you can normally open on your computer.

The program is controlled by Settings File(s). You can use one or more Settings Files at anytime. These can also be added/removed at anytime. The program can load Settings Files from your computer, other computers/network, and/or from the Internet.

The benefit of having Settings Files is that you can have/use your own, and/or ones provided by your institution, and/or ones provided on the Internet (URL). This allows many parties to control the settings at the same time. Each time the program starts, it will reload (refresh) all settings. This can also be done within the program.

---

## Installation

- copy the lccToolBook.exe to a folder
- (optional) create Logic File(s), depending on the need (if none provided, program will auto generate one)
- run the lccToolBook.exe

---

## First Time Use

When you run the program for the first time, it will let you know that no Settings File exists and ask if you want one created (unless ones have already been created/provided for you).

The set of prompts when run for the first time and setting up your first Settings File are as follows:

- [Settings Not Found] Will let you know no Settings File found and ask if you want one created.
- (if you click 'Yes')
- Will let you know that it wants you to choose a location for the new Settings File, click: OK
- Choose the location you want to save the Settings File, then Click: OK
- The program will now create a file called "lccToolBook-logic.txt" in that location.
- Will let you know you can edit the new Settings File by choosing 'Edit Loaded Settings', click: OK

---

## Using

The program has the following visual parts.

## **Top Menu**

The following menu items are available.

### **About**

Takes you to the website for downloading, providing information about the program.

### **Settings**

The following sub-menu items are available.

#### **Add Settings: Local**

Allows you to choose a Settings File from your computer.

Will open a Windows Explorer box, where you can traverse to the location. Once you find the desired Settings File, click it, then click: Open

#### **Add Settings: Network/URL**

Will show a box (just below the menu) where you can enter a network or URL Settings File location. Once entered, click: Add

#### **Create Basic Settings**

See section First Time Use on details/instructions on auto creating a Settings File.

#### **Edit Loading Settings**

Will display all used Settings File(s). To edit (open) for editing, click the desired Settings File. The program will then open it in Notepad.

Once you are done editing, close the file and choose the 'Reload All Loaded Settings' menu option under the Settings menu.

#### **Reload All Loaded Settings**

Will reload all loaded settings. Any changes made to any of them will now be shown.

#### **Show Current Setting Paths**

Shows all currently used Settings File(s). You can click on any of them to copy their path to your clipboard.

#### **Remove Settings**

Will remove a Settings File from your used one and automatically refresh all others that are used.

### **Visuals**

The following sub-menu items are available.

#### **Font-Size**

Allows you to change the font-size used in the program.

### **History**

Shows all Settings File(s) that have been used in the past. You can click on any to re-use them.

### **View**

The following sub-menu items are available.

#### **Turn Index Off**

Turns off the Left Pane - Tree View Index

#### **Turn Tabs Off**

Turns off the Right Pane - Tabs View Index

#### **Turn Both On**

Turn on both the Left Pane - Tree View Index and Right Pane - Tabs View Index

### **Tools**

The following sub-menu items are available.

In Settings File(s) you can specify colors for tabs and buttons. The 'Color Picker RGB' and 'Color Picker Hex' menu options below allow you to find the desired color and paste that value to your clipboard.

#### **Color Picker RGB**

Allows you to pick a color and copy its RGB value to your clipboard.

#### **Color Picker Hex**

Allows you to pick a color and copy its Hex value to your clipboard.

### **Current Settings Path**

Will copy the Settings File path used for the currently selected Tab into your clipboard.

### **Create Settings From Links In File**

Will allow you to choose a file with web links (HTML) and will auto create setting lines that you can paste into a Settings File.

### **Auto Create Program Code**

Will display any currently running programs and allow you to Create Code (setting line) that you can then place into a Settings File.

Click on the program you desire, then click: Create Code

When done, click: Close

### **Left Pane - Tree View Index**

The Left Pane - Tree View Index section displays all tabs in a Tree View. This allows you to expand/collapse each set (Tab) of processes you can run. Just click on the desired one to launch.

Next to the INDEX label is a box. If you start typing in that box, any processes in any Settings File(s) you have loaded will be displayed in a search section. Just click on any process in the results to launch.

### **Right Pane - Tabs View Index**

The Right Pane - Tab View Index section displays all Tabs for all Settings File(s). Each Tab then contains the processes defined for that Tab. Just click on any process Button and it will launch.

If you have many tabs, you can use the Tab navigation buttons above the Tabs. Some may or may not show, depending on where you are viewing. For example, if you are on the left most tab, the 'Move Tab Left' button is not displayed, as that Tab is already at the far left.

The following Tab navigation buttons are available.

<<

Moves you to the farthest left tab.

**Move Tab Left**

Moves the current Tab left one position.

**Move Tab Right**

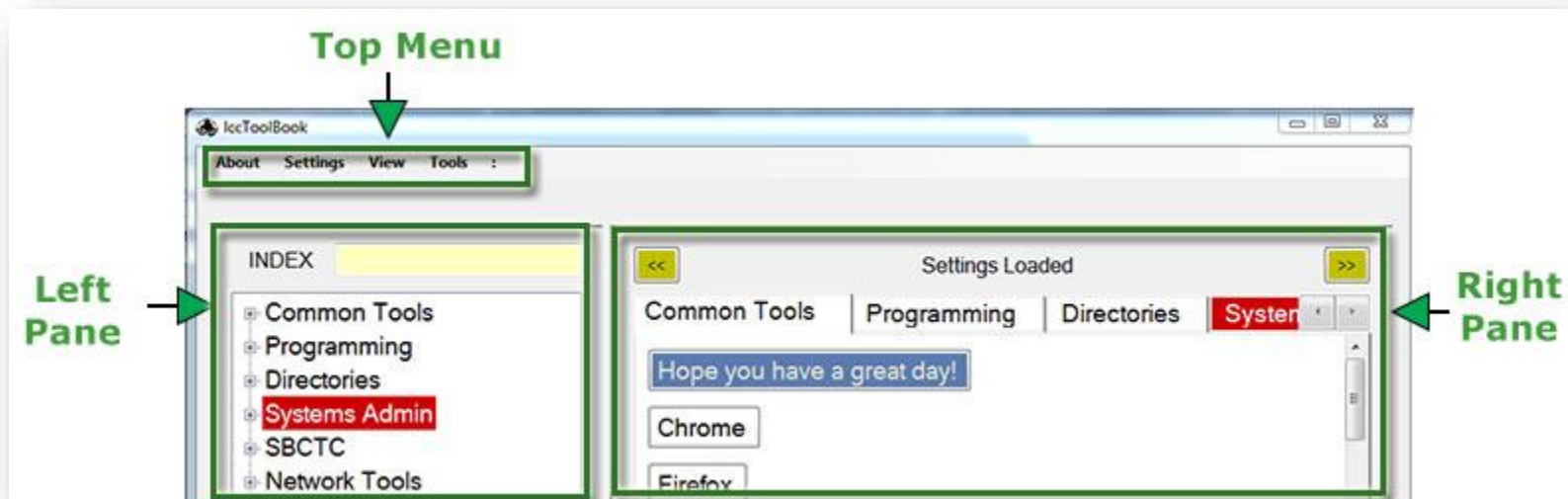
Moves the current Tab right one position.

>>

Moves you to the farthest right tab.

---

## Program Parts



---

## Definitions

**Button** – a button that is clickable to start a program

**Tab** - a page containing buttons

**URL** - Uniform Resource Locator, a website address

---

## Modifications

<b>NAME</b>	<b>DATE</b>	<b>MODIFICATION</b>
David Mielcarek	20180125	Created

---

End of document